

# IHAUMI E!

TĀNGAITI 3, 2020

NIKOA TE AO ARARAU

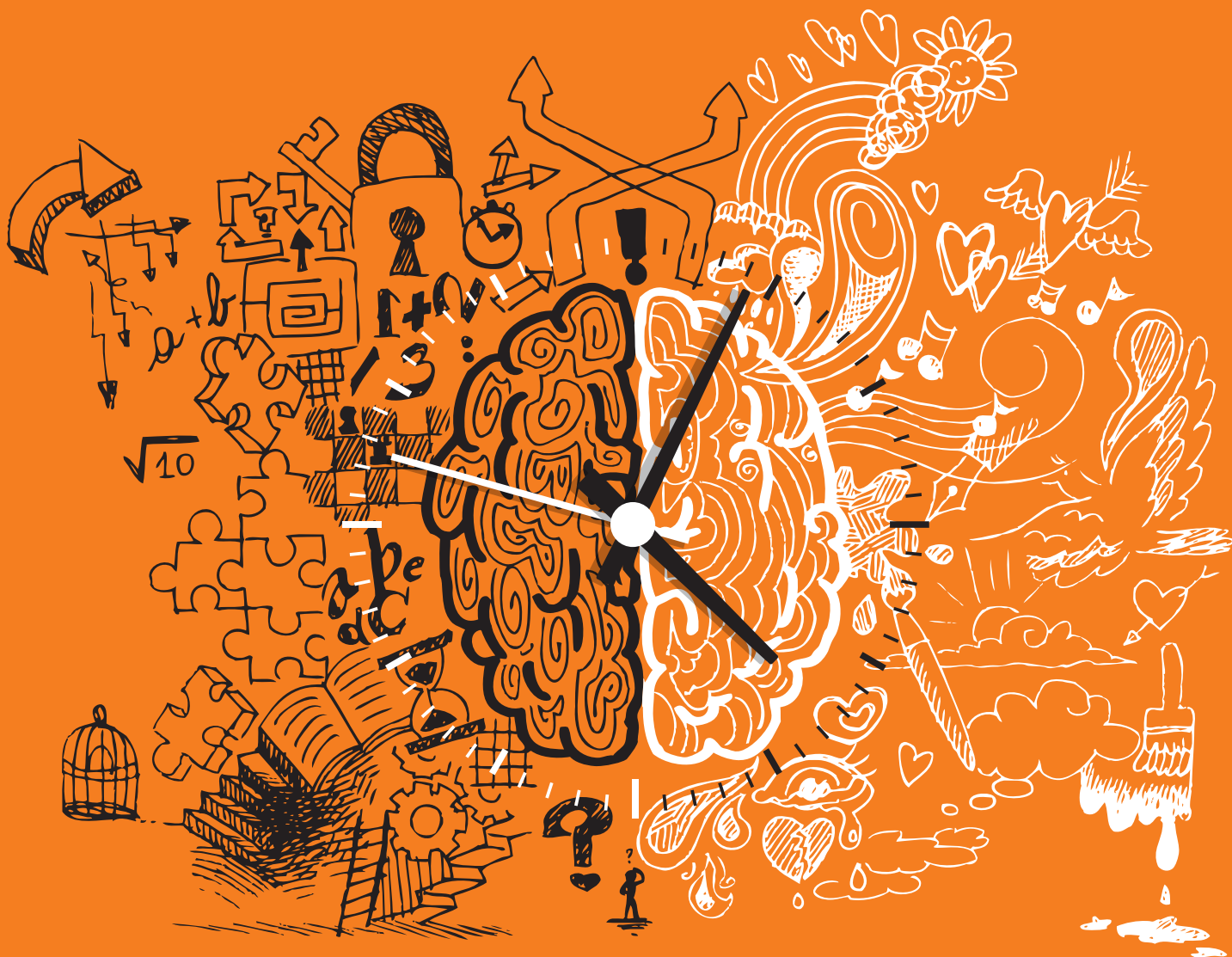


TE KŌRERO  
TENE

HE PANGA KUPU

TAKATŪ AKE

HE KŌRERO  
MIRAMIRA



# TE KŌREIRO TENE: PĒHEA TŌ WHIRI KAUPAPA?

## ► nā Tāmāti Waaka

**H**ei ngā Whakataetae mō Ngā Manu Kōrero, e tāria ana ngā kōrero tene a ngā tuākana o Pei Te Hurinui. Mō te hunga tauhou ki te whakataetae nei, e rima mineti te wā takatū a te kaikōrero i tana kaupapa, ā, ka tū ki mua i te marea kōrero ai mō te toru mineti.

Waihoki ko te tohu ia o te arero koi, hinengaro koi hoki o te kaikōrero. Tōna tūnga toa, kei tōna atamai ki te whītiki kupu i te ruarua mineti. Ehara kau tēnei i te mahi waingōhia, kāo, engari he wā mōrearea kē mēnā kāore i rite kau te manu kōrero ki te puta i tōna kōhanga.

E whai ake nei ētahi kupu āwhina i te manu kōrero i roto i te wāhanga o te kōrero tene, e hoka ai ōna parirau, e rangona ai tōna kō, e tau ai tana tū i te ahurewa kōrero.

Tuatahi ko te kōwhiri i te kaupapa tōtika. Tērā ētahi kaupapa me uaua tonu e puta ai he kōrero whaikiko. He momo hīnaki ēnei momo kaupapa hei here i te kaikōrero. Ko te tauira o tēnei, ko te kōrero pea mō Pukamata, mō tō waea pūkoro rānei, mō tētahi atu mea kiko-kore pēnei i te pani makawe! Ahakoa koinā tonu te aranga nui a te taiohi, i te mutunga iho he hauwarea noa. Ko te rongoa pea mō tēnei, ko te whakahē kē i te hua o te kaupapa!

Te nuinga hoki o ngā kaupapa kōrero, he taharua, arā he taha whakaae, he taha whakahē. Ahakoa he aha te taha ka whāia e koe, ko te mea nui kia hāngai tonu āu kōrero ki te taha i tīkina e koe hei whai māhau.

Ko tētahi atu huarahi hoki e rangona ai te kō a te manu kōrero i roto i te pōkai takitini, kia tūpato i a kaupapa rangona whānui, pēnei i te 'haki o Aotearoa', me whai whakaaro ki a kaupapa e ākiritia ana e te nuinga. Hei konā ka ara ake te ngutu o tō manu, ā, ka area e te hunga whakarongo. Me pēnei pea taku kōrero; mēnā e 14 ngā kaikōrero, ā, 13 o ēnā i kōrero mō te kaupapa kotahi, ka maroke ki te hunga whakarongo. Nō reira, mēnā ka taea, tīkina a kaupapa puiaki, kia noho ko koe tonu te 'kōtuku rerenga tahi' o te whakataetae.

Kāti ake e hoa mā he maramara kupu akiaki i te manu kōrero kia eke ia ki te tāpuhitanga o te rākau. Ko te whiri i te kaupapa kōrero tōtika te tuatahi o ngā mahi a te manu kōrero i roto i tana rima mineti. Kia mahara ake, he poto te wā! Nō reira kua e takarua, ko te pūtahi o te wā me pau kē i runga i te raupapatanga whakaaro, i te whakakiko hoki i taua raupapa. Hei kōrero whakamutunga māku, ko te poutokomanawa tonu o whare whakaaro, ko te reo Māori - koirā tonu te huruhuru e tau ai te manu kōrero. ▲

“

**WAIHOKI KO  
TE TOHU IA O  
TE ARERO KOI,  
HINENGARO  
KOI HOKI O  
TE KAIKŌRERO**

”

### ? He Whakapātaritari

1 He tika, he hē rānei tēnei whakapae a Tāmāti Waaka: 'Ko te kupu āwhina tuatahi mō te manu kōrero me tārua koe ngā kōrero a tētahi atu?'

2 He aha ētahi kupu whakamahiri e toru a Tāmāti kia tutuki pai i a koe te kōreo tene?

3 Whakaarohia tēnei whakatauki 'he pi ka rere'. Ki a koe, he aha tōna tikanga?

# Te Reo o Waikato

## Waikato Taniwharau he piko he taniwha, he piko he taniwha

Mai i Te Pūaha o Waikato ki ngā awa rerehua o Taupō-nui-a-Tia, huhura ai taku awa koirora a Waikato. Huhua ngā taniwha o te awa o Waikato, arā, ko Paneiraira, ko Tarakookoomako, ko Ngeru me Tūheitia. Noho ai rātou ki ngā pikonga o ngā awa, okioki ai me te noho hei pouwhakawhirinaki mō te awa.

## Waikato Horo Pounamu

Auraki ki ngā rā o pēperekou, ki ngā rā i tū ai te pakanga a Hingakākā, ki te taha o te awa. Ko te rangatira o aua rā ko Te Rauangaanga, ā, koia te Pāpā o Pōtatau Te Wherowhero. Engari, kīia ana te kōrero, i murua te tini ki te tahataha o te awa, ā, rehurehu ai ō rātou pounamu, piki kōtuku ki te awa. Koirā ka kīia ai ko Waikato Horo Pounamu.

"Māku anō hei hanga i tōku nei whare, ko ngā pou o roto he māhoe he patete, ko te tāhuhu he hīnau, ngā tamariki o roto me whakatupu ki te hua o te rengarenga me whakapakari ki te hua o te Kawariki."  
Ko ngā pou pou o tōku whare he māhoe, he patete, ā, ko te tāhuhu he hīnau. Ko te patete me te hīnau he rākau whakaiti, nō reira e tohu ana tērā, ahakoa rangatahi mai, pakeke mai e taea ana e koe tōu ake huarahi te whiriwhiri.

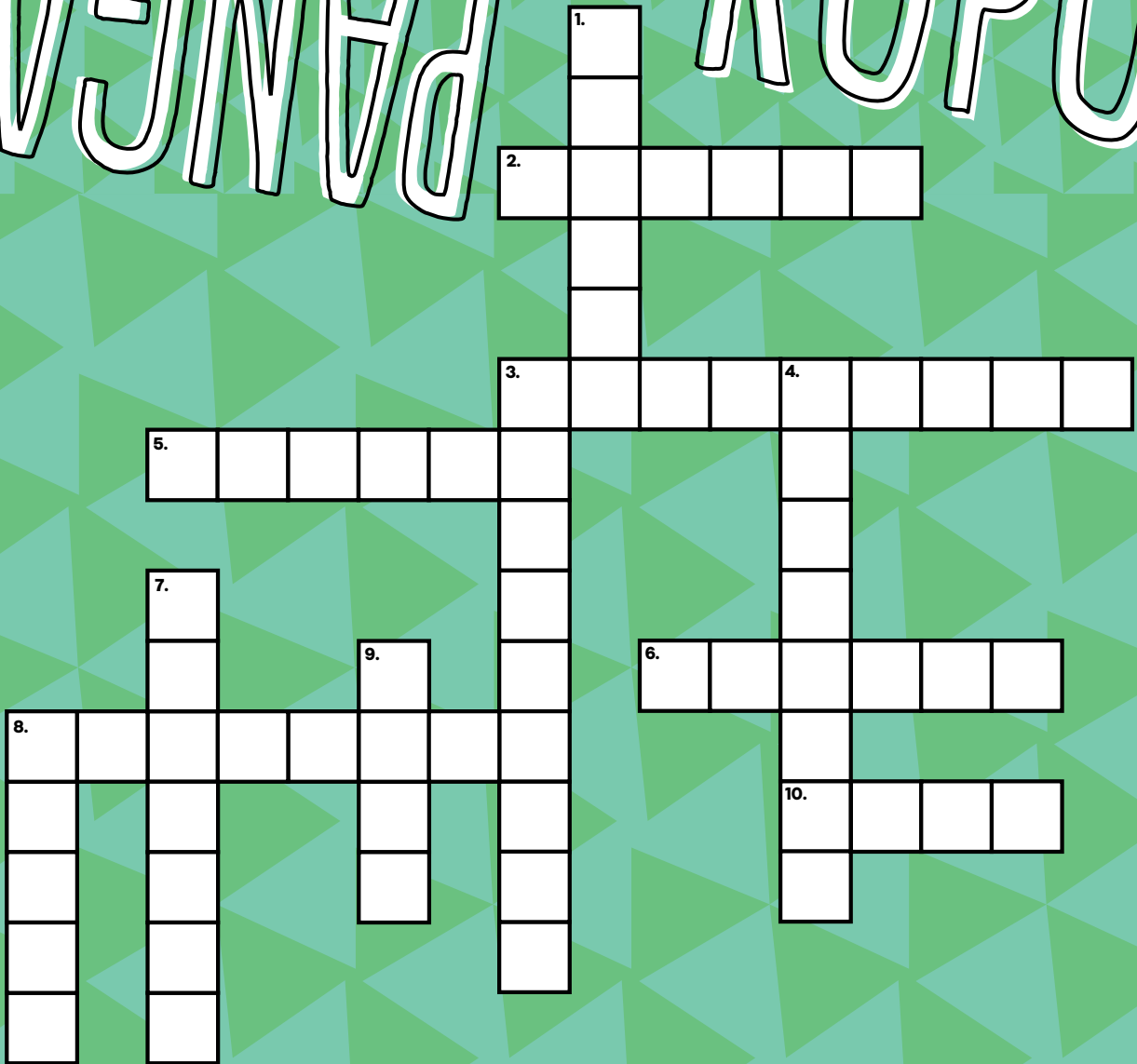
## Ko Arekahanara tōku hāona kaha, ko Kemureti tōku okohoroi, ko Ngaruawāhia tōku tūrangawaewae.

Kīia ana tēnei kōrero e Kīngi Tāwhiao kia tohutia kei whea tōna hāona kaha, tōna okohoroi me tōna tūrangawaewae - ērā wāhi katoa kei roto i te Kīngitanga me te riu o Waikato. Koirā i rongonui ai tēnei tongi a Tāwhiao.

## Māhanga whakarere kai, whakarere waka, whakarere wahine

I ngā rā aweko he tangata hīanga a Māhanga. I aua rā, he māmā mōna ki te whakarere i ōna tūāhuatanga, arā, ko te kai, ōna waka me āna wahine. Ko tērā te whakamāramatanga o tēnei kōrero.

# HANGA KUPU



## NGĀ TĪWHIRI

### Whakapae

2. Hanga whare (6)
3. He tino kai ki Makitānara (8)
5. Te taha moana (6)
6. He kupu taurite mō te pukunati (6)
8. He otaota pūareare e tipu ana i te ngahere (8)
10. Te Matatini o \_ \_ \_ \_ (2, 2)

### Whakararo

1. Kei tēhea whenua te tāone o Monza? (6)
3. Te maunga e tauria nei e te huka (9)
4. ... kānehana e (8)
7. Te taha taurite o te taha uru (7)
8. He tino kai nō te moana (5)
9. He kupu anō mō te pākuru (4)

# TAKATŪ AKE

## Me whiwhi ka tika!

Kāore e kore he mea kaingākau e te rangatahi te whiwhi raihana motokā. Ki te whiwhi raihana ākongā koe, ka whakaaetia kia ako koe ki te taraiwa motokā! Arā, ka whakaaetia kia taraiwa motokā i te taha o tētahi kaiako taraiwa, o tētahi pakeke rānei kua roa tana whai raihana tūturu. Nā reira e tai mā – me whiwhi ka tika! Ki te kore koe e whiwhi raihana, kia kotahi atu tō haere ki te tūnga pahi!

Me pēhea te whiwhi raihana ākongā?

- Kia 16 (nui ake rānei) ō tau.
- Ākona ngā ture o te Road Code.
- Whakamātauria tō māramatanga me tō maumaharatanga mā ngā whakamātautau whakaharatau.
- Tukuna tō tonu ki te AA, ki wāhi kē rānei e whakaaetia ana hei tuku whakamātautau raihana; ka whakamātauria hoki ō kanohi ki reira.
- Mahia te whakamātautau! Kia kaha!

I mua i te whakamātautau me mātua mōhio koe ki ngā ture o te Road Code. Nā ēnei ture e haumarū ai koe mā runga motokā, e haumarū ai ngā tāngata katoa i ngā huarahi o te motu! Ka taea te pukapuka nei te pānuī utukore i te ipurangi. Anei te hononga: <http://nzta.govt.nz/resources/roadcode>

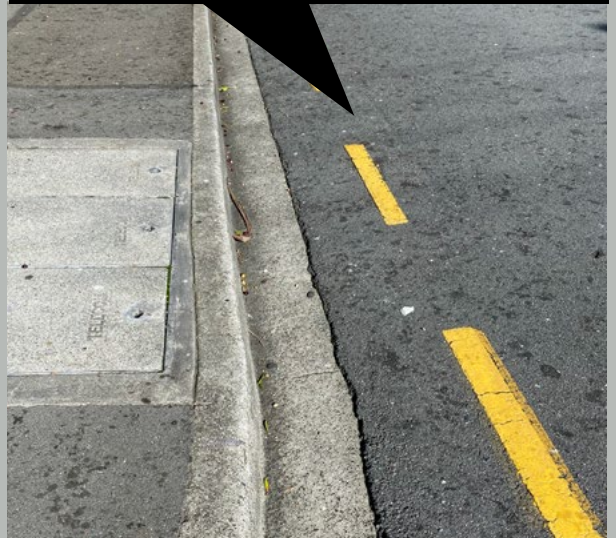


Hei āwhina i a koe, arā ētahi whakamātautau whakaharatau i te ipurangi hoki! Me mahi ēnei e koe i mua i tō whakamātautau tūturu. He rite tonu te āhua o ngā pātai. He utu tō te nuinga o ēnei whakamātautau, heoi anō, anei tētahi mea utukore: <http://www.aa.co.nz/drivers/road-code-quiz>

E pēnei ana ngā pātai o te whakamātautau rā. He whiringa māu kei ia pātai. Kei te tika, kei te hē rānei te kōrero e whai ake nei? He aha te whakautu tika?



**He rārangi pāwhati.** Ko te tikanga: ka whakaaetia kia tū tō motokā ki reira i ngā wā katoa.



**A:** Kei te tika

**E:** Kei te hē

Anei ngā tatauranga paihēneti (i te tau 2018) mō te hunga i puta ō rātou ihu i te whakamātautau raihana:

**16 tau te pakeke: 66%**

**17 tau te pakeke: 57%**

**18 tau te pakeke: 54%**

**19 tau te pakeke: 52%**

E 35 ngā pātai o te whakamātautau, me tika ngā whakautu e 32 kia whiwhi raihana koe. Ki te kore, me hoki anō, me mahi anō, me utu anō hoki (\$48.20 te utu, i ia wā, i ia wā). He \$86.60 anō mō te utu whakamātautau.

Ina rite katoa koe ki te mahi i te whakamātautau, ka aha koe i te wā e tū ai te whakamātautau?

- Haria tō Uruwhenua Aotearoa, e rua rānei ngā tohu tuakiri pērā i te tiwhikete whānau me te nama o Te Tari Taake (IRD).
- Hainatia te mata rorohiko ki tō ingoa, mō runga i tō raihana hou.
- Mahia te whakamātautau kanohi (i te wāhi tonu o te whakamātautau raihana).
- Kapohia tō whakaahua mō runga i tō raihana hou.
- Mahia te whakamātautau raihana! Whakautua ngā pātai!

Kāti! E hoa mā, me hipa ka tika! Kei mahue koe i te pahi (me te motokā), tō haere mā raro!

# HE KŌRERO MIRAMIRA

## TE HOKO KĀKAHU I RARO IHO I TE \$100

Mō ērā o tātou kāore e rata ana ki te nui o te utu mō ngā kākahu, anei rā ētahi whārangi ipurangi hei wherawhera māu.

### WHĀRANGI IPURANGI

[www.asos.com](http://www.asos.com)

Ko te tuatahi ko Asos. Kāore i tua atu i a Asos mō ngā kākahu kounga, heoi, e ngāwari ana te utu. Ko te pai hoki o te whārangi hokohoko ā-ipurangi nei he utu kore te tuku mai ki Aotearoa. Ka mutu he kākahu mō ngā tama, he kākahu anō mō ngā kōtiro.

[www.nzsale.co.nz](http://www.nzsale.co.nz)

Ko te tuarua ko NZSale. Ehara i te mea ko ngā kākahu anake kei te whārangi nei, he taputapu whare anō hoki. Ko te painga atu he kākahu tamariki, he kākahu tama, he kākahu kōtiro anō hoki.



### Ngā Toa HOKOHOKO

Kei pōhēhē koe ko ngā kākahu hou noa iho a runga. Engari mō tēnā! Kāore i tua atu i ngā toa hokohoko puta noa i Aotearoa. Ko tētahi toa hokohoko ko *SaveMart*.

Inā te huhua puta noa i tēnei whenua taurikura o tātou! Heoi, ko te mahi nui i ēnei toa ko te āta wherawhera i ngā kākahu katoa, mā konei anake e kitea ai ngā pueru waitohu. Kei tēnā toa, kei tēnā toa ngā kākahu rerekē. Ko ngā poraka anō hoki ka kitea mō te \$5 ki te \$10. Toro atu ki ēnei toa e hoa mā. Wherawherahia ngā whārangi o *Google*, mā konei e kitea ai ngā wāhi e noho nei ngā toa o *SaveMart*.

Ehara i te mea me nui te utu o ōu kākahu katoa. Ko te painga atu mēnā kotahi, e rua rānei ngā pueru waitohu, taunaki atu ki ngā kākahu ngāwari te utu.



# Reo a-iwi.

## Te Reo o te Whārua

*He maha ngā kupu, ngā rerenga kōrero, ngā kūwaha e whakamahia ana e mātau o te whārua o Rūātoki. Ko te mate nui kē, ko ēhea rā ngā mea pai hai tāpiri ki tēnei o ngā whārangi! Hoi anō, kia huri ake tātau.*

Tō kēpe - tō tero e tama!

"Ēkene koe!"

Kai reira!

Kai runga noa atu koe e hoa!

Ehara!

Tāhae, poai - he rite ēnei kupu ki te tama!

Kai hea kē tō poai?  
Ko wai te tāhae rā?  
Engari mō tēnā!

Koia, koia!

Te haere mā raro!  
Te toi atu ki te whare o mea!

"Mā hea mai koe e hoa?"  
"Mā raro!"

E toi atu ana au ki uta!  
(ki hea rānei?)

Ēnei kōrero e rua, e hāngai ana ki te kupu "hīkoi"! E kī ana koe e "hīkoi" ana koe ki te wāhi e hiahia ana koe ki te haere.

Kia whakaoti haere i runga i te kōrero, ahakoa he iti, he pounamu!

# TE TAPATI O TE RAPA NUI



## ► nā Te Rawhitiroa Bosch

**E** ai ki ngā kōrero tuku iho, nā te moemoeā a Haumaka - he matakite nō te moutere tahito o Hiva - i kite tuatahi i te moutere nei, ā, i tere mai te Arikinui, a Hotu Matu'a me tōna iwi, kia nohoia tēnei whenua hei kāinga hou mō rātou. Kua hau te rongoa a te iwi Rapa Nui nei huri noa i te ao, i te mea nā rātou ngā whakairo kōhatu kaitā nei, arā, ko ngā moai i tārai.

He nui ngā hononga i waenga i a tātou ngā Māori o Aotearoa me ngā Māori o te iwi Rapa Nui. Tuatahi rā, he Māori hoki rātou! He hononga ā-whakapapa i roto i ngā kōrero a te iwi nei, ā, he nui hoki ngā ritenga o te reo Rapa Nui ki te reo Māori. E ai ki te iwi nei, he tohu whakamaumahara ngā moai ki ō rātou mātua tūpuna, he rite tonu ki ā tātou whakairo e tū nei i roto i ō tātou whare tūpuna.

He hui ahurei whakamiharo te Tapati o te Rapa Nui, ki konei rātou whakaara anō ai i ngā taonga tuku iho a ō rātou tūpuna kia tū kaha, kia tū rangatira te iwi Rapa Nui i roto i tō rātou ahurea Māori. He kaha te whakataetae a te iwi i roto i ngā mahi katoa, ā, ka tau mai te tini me te mano ki te mātakitaki, ki te ako, ki te whakangahau hoki mō ngā wiki e rua o te Tapati.

Ka tū te ihi, ka tū te wehi, ka tū te wana i te wā o te Haka Pei, he mahi whakataetae nō onamata. Ka hangaia he kōneke ki ngā rākau panana, kātahi ka retireti mai i te tihi o Maunga Pu'i tae noa ki tōna pūtake. Te mōrearea hoki! Nā te ninihi o te puke, ka tere rawa atu ngā kōneke nei - tata tonu ki te 80km/h! He maro, he huru manu me te takona noa iho ō rātou kākahu - kārekau he kākahu haumaruru! Ko tēnei te mahi a te iwi nei ki te whakaatu i tō rātou kaha, i tō rātou māia hoki.

Noho riva riva! ▲



## HEI WHAKANUI I TE TAIOPENGA TAPATI

**he takona** - he whakarākei i te tinana ki te kī'ea (uku)

**he himene** - he waiata

**he 'ori** - he kanikani

**he tarai** - he whakairo

**he rei rei kahu** - he whatu, he raranga kākahu rānei

**he hi kau** - he ruku ki te tao ika

**he kai kai** - he mahi whai (te aho, pēnei ki tā tātou te Māori) hei whakaatu i tētahi kōrero o nehe

**he haito i te kai ha'apu** - he whakatupu kai ki ngā mahinga kai

**he haka ngaru** - he whakaheke ngaru mā ngā papa raupō, he āhua pēnei ki ngā mōkihi o Ngāi Tahu.

**he haka pei** - whakaheke kōneke kua hangaia ki te tumu panana.

# HE PANGA KIMI KUPU

## ► nā Vini Olsen-Reeder

**E**hara i te mea me whakaniko i ngā kupu katoa ka taka mai i te waha. Heoi, he wā anō ka toko ake te huatau kia auaha te kōrero, kia kitea ai te ātaahua o te whakaaro. Hei ēnei wā nei, huri ai te tangata ki te whakairo i tāna i whakaaro ai ki te kupu whakaniko pēnei i ēnei e whai ake nei. Heoi anō tāu he kimi! He noho pāeke ngā kupu, e poutū ana rānei, ā, e kōmuri ana te noho a ētahi. Kia maumahara mai: kāore he mana o te tohutō i te panga nei. ▲

M	U	M	R	I	K	U	R	I	K	U	R	A	H	I	R	N	K	R
M	A	W	M	R	P	K	A	I	T	A	M	U	A	R	A	T	A	M
A	A	P	P	O	K	T	K	T	H	E	N	G	A	H	E	N	G	A
U	P	N	N	T	N	U	O	T	I	N	I	W	I	N	I	W	I	H
I	O	O	U	T	U	A	M	O	N	E	A	E	N	A	M	U	H	I
O	A	M	O	N	P	O	A	O	I	N	H	I	M	O	E	M	O	E
P	M	I	O	K	W	I	K	O	N	E	N	W	E	U	A	O	H	W
I	O	R	O	P	O	R	O	P	A	U	T	O	I	I	P	O	A	U
U	H	U	M	U	H	U	M	O	U	N	T	O	R	K	T	U	M	H
A	K	W	H	U	H	O	I	N	E	M	N	A	I	E	T	A	A	O
O	A	E	P	A	T	M	T	K	R	R	M	E	N	A	T	O	T	H
N	O	E	M	O	H	O	R	I	R	I	W	A	I	H	R	U	A	R
H	O	R	A	R	U	A	H	I	P	I	T	K	R	M	H	I	H	M
M	R	I	O	W	A	I	G	N	A	R	A	W	A	N	A	M	E	H
W	A	R	A	K	E	A	R	O	N	E	H	E	T	P	N	K	T	M
A	U	N	E	H	W	A	R	A	P	I	T	I	P	A	P	A	A	E
W	A	E	R	A	W	U	A	H	N	H	M	K	T	K	K	N	H	O
R	A	O	R	I	P	U	H	I	U	W	O	O	K	W	K	U	E	N
O	R	E	M	U	R	E	R	E	M	I	E	R	I	R	E	R	I	R

<b>hārukiruki</b>	whai ai tēnei kupu i te taumaha	kei te whānau pani e kawē rā i te taumaha hārukiruki, e mihi ana
<b>hauwarea</b>	he mana kore, kiko kore	hei aha māna me ana kōrero hauwarea rā!
<b>hengahenga</b>	whai ai tēnei kupu i te maroke	e kore te puna aroha e maroke hengahenga
<b>himoemoe</b>	he rongō kawa	himoemoe ana te rongō me he kai pirau
<b>hiwiniwini</b>	mamae rawa	hiwiniwini ana te tinana, kua korotūangaanga
<b>ihumanea</b>	he mōhio rawa	he ihumanea katoa tērā tangata ki āna mahi!
<b>ihupiro</b>	he ihupuku	he ihupiro noa i te timatanga, ināianei kua ihumanea rawa!
<b>manawarangi</b>	he kapua paku nei te kura i roto	he manawarangi i te ata, he hekenga ua
<b>mātahetahe</b>	he turuturu	mātahetahe ana a waikamo i taku raukura ka riro
<b>matarauhati</b>	he moe kāore e au	matarauhati ana te moe, pēpeke ana ngā whakaaro
<b>mohoririwai</b>	manawa kiore	kua koroheke rawa au, kua mohoririwai
<b>muhumuhu</b>	hōhā	kua muhumuhu katoa te ngākau
<b>parawhenua</b>	waipuke	parawhenua ana tō kāinga e te roimata mōu, e te hoa
<b>remurere</b>	te tino mate ki tētahi kaupapa	remurere katoa ana au ki te reo
<b>rirerire</b>	whai ai tēnei kupu i te ātaahua	e Kui, tō ātaahua rirerire!
<b>timokamoka</b>	kua noa noa iho	taku mōhio ki te mahi raranga kua timokamoka
<b>tipapa</b>	whakatakoto	kei te hoa e tipapa mai rā, oki atu rā!
<b>tipihauraro</b>	patu	kua tipihaurarotia e te ringa kaha o mate
<b>tūāporoporo</b>	ririki	kia kau e tūāporoporo te mōhio ki te reo Māori

# He Panga

PANGA  
KUPU  
NDUX

**WHAKAPAE:** 2.Kāmura 3.Hamupeka  
5.Tātahi 6.Tūpuhi 8.Kawakawa 10.te Ao

**WHAKARARO:** 1.Itāria 3.Hikurangi  
4.Putiputi 7.Rāwhiti 8.Kōura 9.Hama

# HAUMI E!

## KAITUHI

Tāmami Waaka  
Arihia McClutchie  
Kawata Teepa  
Te Rawhitiroa Bosch  
Vini Olsen-Reeder

## KAITĀ PIKITIA

Carla Francesca Castagno/Shutterstock.com (wh. 2)

## NGĀ WHAKAAHUA

NZ Transport Agency (wh. 6)  
Stocked House Studio/Shutterstock.com (wh. 6 & 7)  
FocusDzign/Shutterstock.com (wh.7)  
Lauren Fleischmann/Unsplash.com (wh. 8)  
Africa Studio/Shutterstock.com (wh.8)  
Brandon Vazquez/Unsplash.com (wh. 9)  
Alex Perez/Unsplash.com (wh.9)  
Te Rawhitiroa Bosch (wh. 10)  
Gabor Kovacs Photography/Shutterstock.com (wh. 10)

Mana tārua i tēnei tāngaiti © Te Tāhuhu  
o te Mātauranga 2020

Kua noho manatā tēnei moheni. Atu i ngā take pēnei i  
ngāakoranga whaiaro, te rangahau, te arotake me te  
arohaehae mahi e whakaetia ana i raro i te Copyright  
Act, kore rawa e tukuna kia tāia anō tētahi wāhanga o  
ngā kōrero nei, ahakoa te huarahi tā. Me mātua tonu  
whakaae ki te rōpū nāna te moheni i tā.

ISSN 2703-5042  
Haumi E! Tāngaiti 3, 2020



He mea whakaputa tēnei moheni mō  
Te Tāhuhu o te Mātauranga e Huia.  
Pouaka Poutāpeta 12-280  
Te Whanganui-a-Tara 6144  
Aotearoa

