

# TE POUTAMA O TE PĀNGARAU

HE PUKANGOHE HEI TAUTOKO I  
TE REO MATATINI O TE PĀNGARAU

RAUEMI TAUTOKO



# Te Kaikawe Kōrero



Ko ngā kōrero nā Ngahuia Wade  
Ko ngā pikitia nā Josh Smits

NGĀ KETE KŌRERO



This publication uses vegetable based inks and environmentally responsible paper produced from Forest Stewardship Council® (FSC®) certified, Mixed Source pulp from Responsible Sources.



Paper produced using Elemental Chlorine Free (ECF) and manufactured under the strict ISO14001 Environmental Management System.

## **Te Kaikawe Kōrero**

I whakaputaina tuatahitia tēnei pukapuka mō Te Tāhuhu o te Mātauranga e  
Huia Publishers 2004  
Pouaka Poutāpeta 12-280  
Te Whanganui-a-Tara, 6144  
Aotearoa  
[www.huia.co.nz](http://www.huia.co.nz)

He mea whakaputa tēnei tānga e Te Tāhuhu o te Mātauranga, 2019

Manatārua i ngā kōrero © Ngahuia Wade 2004  
Manatārua i ngā pikitia © Josh Smits 2004  
Manatārua i tēnei pukapuka © Te Tāhuhu o te Mātauranga 2004  
Pūmau te mana.

ISBN 978-1-77663-422-4

Ka wātea tuihono he rauemi tautoko me tētahi i-pukapuka mā te pouako  
mō tēnei pukapuka i [www.kauwhatareo.govt.nz](http://www.kauwhatareo.govt.nz)

Ki te hiahia koe ki ētahi atu kape o tēnei rauemi (nama take 63422), whakapā mai ki:  
Te Ratonga Kiritaki a Te Tāhuhu o te Mātauranga Waea koreutu 0800 660 662  
Īmēra: [orders@thechair.minedu.govt.nz](mailto:orders@thechair.minedu.govt.nz)  
Me tonu mai rānei mā te ipurangi ki [www.thechair.co.nz](http://www.thechair.co.nz)

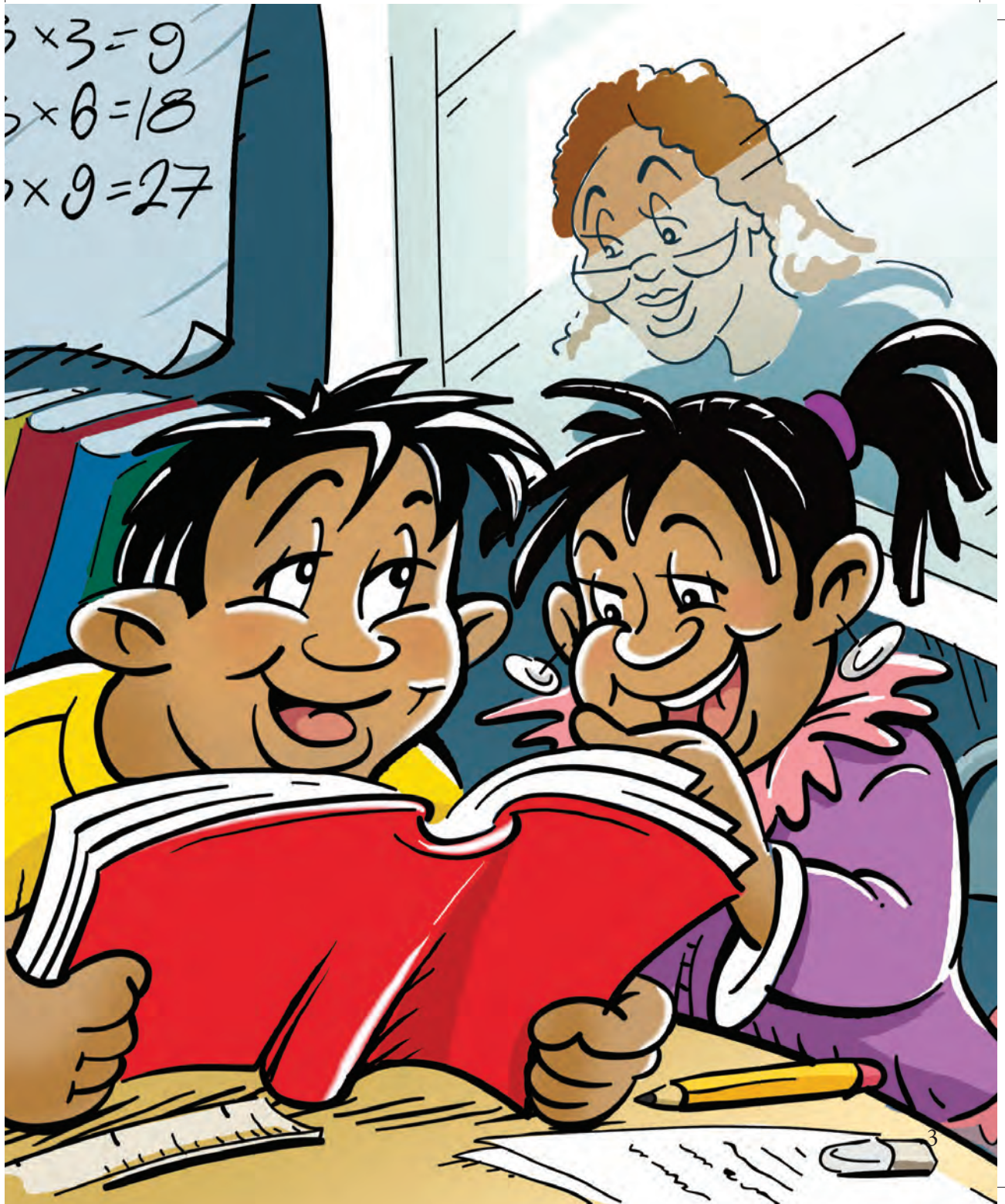
# Te Kaikawe Kōrero



Ko ngā kōrero nā Ngahuia Wade  
Ko ngā pikitia nā Josh Smits

Kia ora, ko Maata Te Mumu tōku ingoa.  
I whakaarohia e au, kāore e roa ka eke koe ki te  
kura tuarua. Nāwai, ka mutu koe i reira ka aha?

Tērā pea he tino pai tāku mahi māhau.  
Nā, māku koe e whakaatu ki tāku mahi rawe.  
I whiwhi i a au tēnei mahi ka riro mā tōku reo  
Māori e hiki, arā te kaikawe kōrero.



Anei ngā tūmomo kaikawe kōrero

- he kaikawe kōrero reo irirangi
- he kaikawe kōrero pouaka whakaata
- he kaikawe kōrero ā-tuhi rānei.

He kaikawe kōrero au mō te reo irirangi Māori puta noa i te motu. Ka rongona āku pūrongo e whakapāohotia ana i ngā reo irirangi ā-iwi katoa. Kei roto hoki i te reo Māori. Ka wani kē, nē.





Ka pēhea te mahi a te kaikawe kōrero?

Hei taurira, kua rongoa au i te taumāhekeheke tākaro ka tū ki Te Wai Pounamu. E kī ana tokowhā ngā tāne Māori kua uru atu ki taua taumāhekeheke arā Te Tai Ākau ki te Tai Ākau.

Ka rangahau au i tēnei kaupapa

- i runga i te ipurangi
- i roto i ngā niupepa tawhito
- i te whare pukapuka hoki.

Kātahi ka whakapā kōrero atu au ki aua tokowhā me te whakarite hoki, te wā hei kōrero ki a rātou. Ka oti tēnā, tere tonu au ki te whakarite i āku taputapu mahi.



He maha āku taputapu mahi

- he mihīni hopu reo hei hopu i ngā kōrero
- he hopu oro hei hopu mārama i te reo o te tangata
- he taputapu mau taringa hei whakarongo ki ngā kōrero
- he pene hei tuhi kōrero
- he puka tuhi hei mau i ngā kōrero, me
- te waea pūkoro hei whakapā kōrero atu ki te iwi whānui.

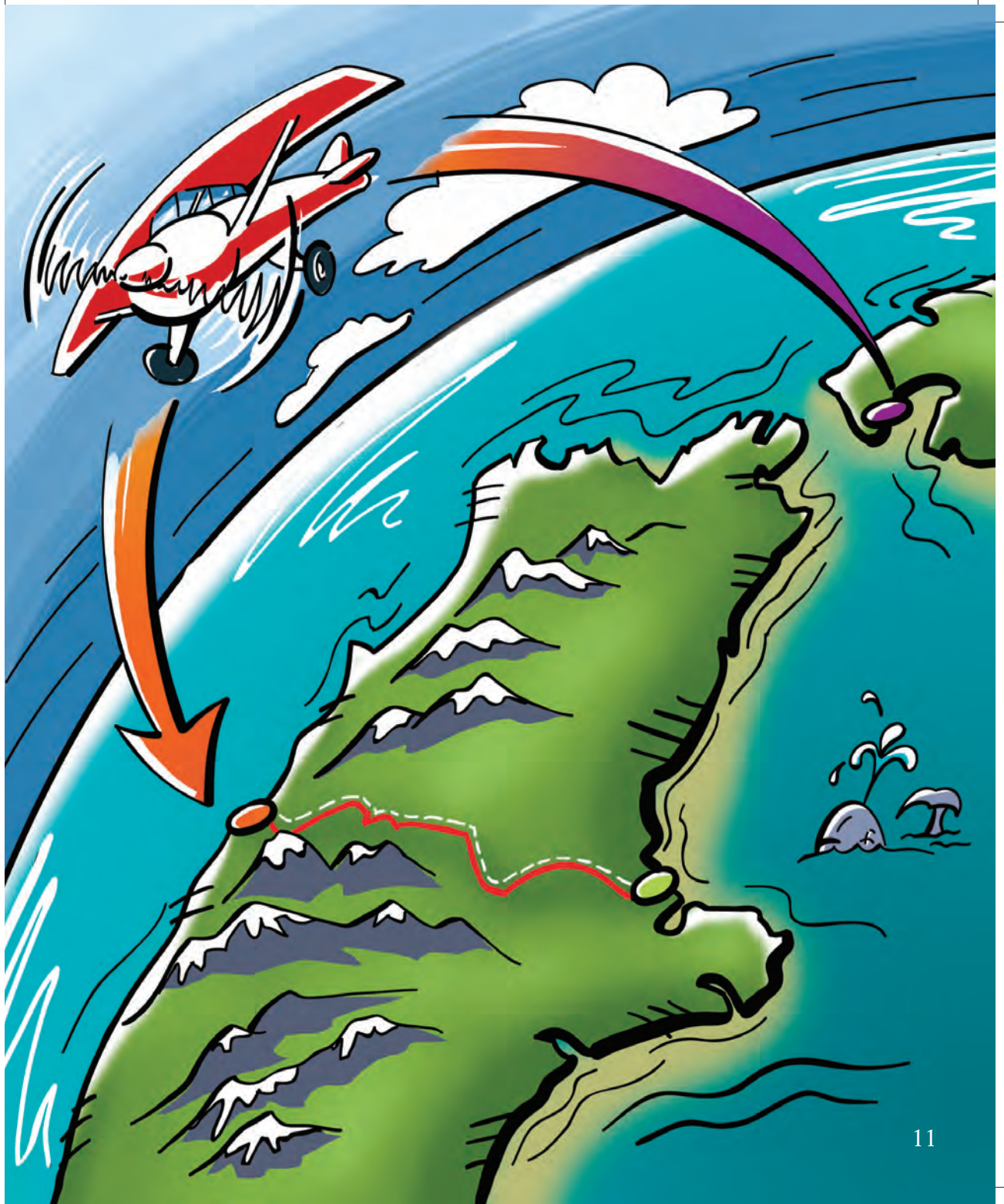
Nā, kua wātea au ki te haere. Ahakoa haere ai au ki hea ka haria āku taputapu mahi. Anō nei he tangata whakahirahira ahau.



Ka rere atu au ki Te Wai Pounamu ki te whai  
kōrero mō te taumāhekeheke tākaro. Mā ēnei  
pātai hei āwhina, hei ārahi i a au kia mārama ai  
ngā kaiwhakarongo ki te ngako o āku pūrongo

- ko wai
- he aha
- nōnahea / āhea
- ki hea
- he aha ai
- me pēhea.

I tēnei rā, ko tāku kōrero e pā ana ki te eke ki  
ngā taumata o ngā tākaro motuhake nei.



Ā, kia whakaritea āku mahi

- kua oti i a au te rangahau i tāku kaupapa
- kei a au ngā kōrero tautoko e pā ana ki tēnei kaupapa
- kei a au kē te whakaaro Māori o tēnei kaupapa, arā *Ehara taku toa i te toa takitahi, engari he takimano nō ōku tūpuna.*

Nā reira, kua tae atu au ki te kōrero ki te tokowhā. Ka mihi atu au ki a rātou. Ka tīmata i

- ō rātou ingoa
- ō rātou iwi, me
- ō rātou wawata.

Ka kōrero mai rātou mō ngā piki me ngā heke o te whakapakari tinana, hinengaro, whānau me te wairua hoki. Kei te whakaaro hoki au ka whakatakoto pēhea āku kōrero mō te pō.





Kua hopukina a rātou kōrero. Me hoki tōtika atu ki te teihana reo irirangi i Otautahi. Hei reira ka whakarite i tāku pūrongo mō te whakapāoho, ka tīmata i te ono karaka i taua pō. Ka tapatapahia e au ngā kōrero pai, ka tuhi i tāku pūrongo me te kōrero atu ki te ētita. He poto noa iho te wā ki a au.



“He tīma Māori kua uru ki roto i te taumāhekeheke tākaro ā-motu i Te Wai Pounamu mai i te taihauāuru ki te tairāwhiti, arā ko Te Tai Ākau ki Te Tai Ākau. Kei tō mātou kaikawe kōrero a Maata Te Mumu ngā whakamārama ...”

Heoi, i oti pai tāku pūrongo, ā, i whakapāohotia atu ki te iwi whānui.



# He Kupu Whakamārama

**pūrongo**

Ko te **pūrongo** te kōrero i whakaputa mai i ngā rangahau.

**tapatapahia**

Ki te **tapatapahia** te kōrero ka whirihia ngā kōrero pai, ā, ka mau. Ka waiho ngā kōrero kāore i te pai.

**ngako**

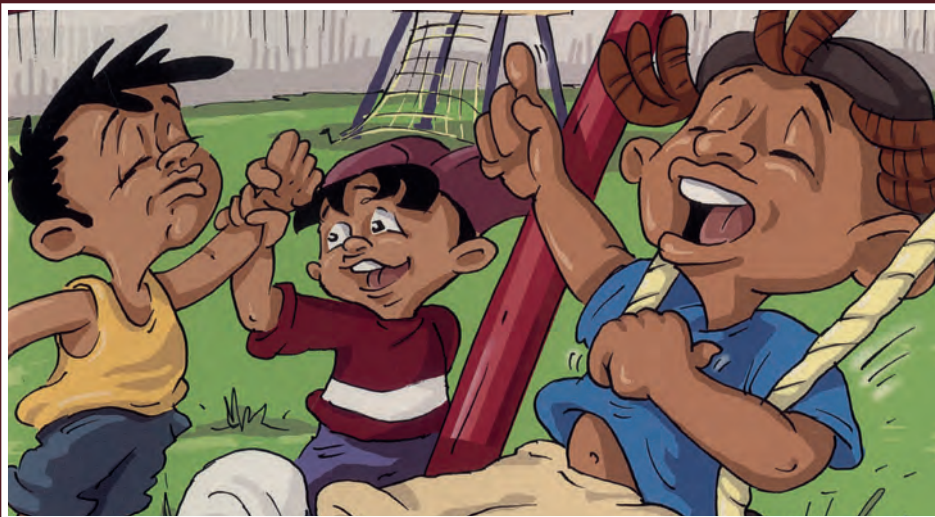
Ko te **ngako** o te kōrero te tino ia o te kōrero.

**ētita**

Ko te **ētita** te kaiwhakatika i ngā hapa o te tuhinga o te kōrero hoki.



# Ākuanei Koe i a Au



Ko ngā kōrero nā Anihera Black  
Ko ngā pikitia nā Loudmouth Productions

NGĀ KETE KŌRERO



This publication uses vegetable based inks and environmentally responsible paper produced from Forest Stewardship Council® (FSC®) certified, Mixed Source pulp from Responsible Sources.



Paper produced using Elemental Chlorine Free (ECF) and manufactured under the strict ISO14001 Environmental Management System.

## Ākuanei Koe i a Au

I whakaputaina tuatahitia tēnei pukapuka mō Te Tāhuhu o te Mātauranga e  
Huia Publishers 2005  
Pouaka Poutāpeta 12-280  
Te Whanganui-a-Tara, 6144  
Aotearoa  
[www.huia.co.nz](http://www.huia.co.nz)

He mea whakaputa tēnei tānga e Te Tāhuhu o te Mātauranga, 2019

Manatārua i ngā kōrero © Anihera Black 2005  
Manatārua i ngā pikitia © Loudmouth Productions 2005  
Manatārua i tēnei pukapuka © Te Tāhuhu o te Mātauranga 2005  
Pūmau te mana.

ISBN 978-1-77663-034-9

Ka wātea tuihono he rauemi tautoko me tētahi i-pukapuka mā te pouako  
mō tēnei pukapuka i [www.kauwhatareo.govt.nz](http://www.kauwhatareo.govt.nz)

Ki te hiahia koe ki ētahi atu kape o tēnei rauemi (nama take 63034), whakapā mai ki:  
Te Ratonga Kiritaki a Te Tāhuhu o te Mātauranga Waea koreutu 0800 660 662  
Īmēra: [orders@thechair.minedu.govt.nz](mailto:orders@thechair.minedu.govt.nz)  
Me tonu mai rānei mā te ipurangi ki [www.thechair.co.nz](http://www.thechair.co.nz)

# Ākuanei Koe i a Au



Ko ngā kōrero nā Anihera Black  
Ko ngā pikitia nā Loudmouth Productions



“Ē, nōu kē te hē, nā tō waha pahupahu,”  
te kōhete a Pene ki a Moko.

“Engari nāu anō tōku pōtae i tāhae,” te kūhine  
a Moko.

Nā tēnei i tukua e Māmā te tokorua nei ki te  
papa tākaro. Ā, kua hōhā katoa rāua.

“Tiakina tāu teina, e Pene,” te kī atu a Māmā.



I te taenga atu ki te papa tākaro, ka noho rāua  
ki te whakatā. “Tōu hōhā hoki,” te amuamu  
a Pene.

Nāwai ra, ka oma rāua ki te tārere. Engari  
kua tae kē ētahi atu tamariki ki reira. “Ea, i kite  
kōrua i a māua e haere pēnā atu ana!” tā Pene.





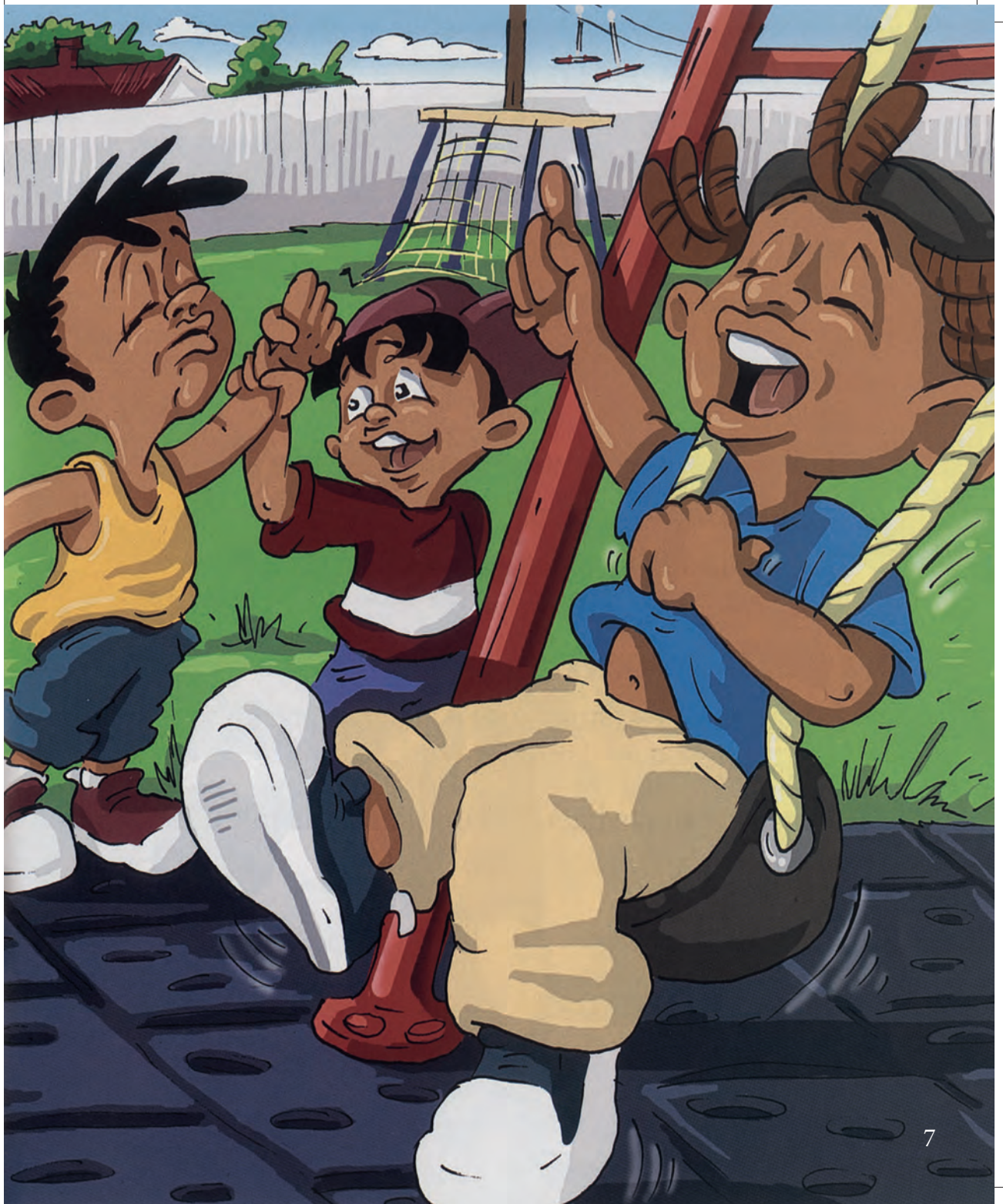
Tere tonu te waha hāparangi a Kiri,  
“Tō kōrua tere hoki! Na, he tāroa tōku tuakana i  
a koe, Pene.

He kaha hoki nōna ki te tārere.”

“Nē hā! Kua takoto te mānuka, e hoa. Kia reri  
kōrua,” te wero a Pene ki a Kiri rāua ko Ngatai.  
Ka tahuri ngā tama ki te whakapiu i ā rātou  
tārere. Pūkana ana ngā whatu, whātero ana te  
arero o tēnā, o tēnā.

“Kei runga noa atu au!” te hāparangi a Ngatai.

“Engari mō tēnā!” te ūmere a Pene.



Ka tīwaha atu a Moko, “E hoa, heoi anō ngā mahi hīanga a tōu tuakana, e Kiri!”

Hiko ana te whakautu, “Ehara! He tipua kē tōku tuakana, e Moko!”

Ka whāia a Pene rāua ko Ngatai e ō rāua tēina.

“Tēnā, haere tāua ki te taura rere ki reira pakanga ai. Ākuanei koe i a au,” tā Pene ki a Ngatai.

Kipakipa ana te haere. Titiro tītaha ana rātou ki a rātou anō.





Ahakoā te whakaae a Ngatai, maku kau ana  
ia, “Kia kaha Ngatai! Tahī, rua, toru, tukua!” te  
tangi a tōna teina.

Hu!

Hu!

Hu! te tangi a te taura rere o Ngatai.

Hu!

Hu!

Hu! te tangi a te taura rere o Pene.

Whetē ana ngā kanohi. Hotuhotu kau ana te  
manawa. Rērere ā-manu nei te tokorua.



“Aī! Tumeke te wheke!” te ūmere a Pene.  
“Auē!” te reo wiriwiri o Ngatai. Kua katia ōna  
whatu. E pupuri kaha ana ia ki te taura rere.  
“Huakina ō whatu, Ngatai,” te wero a Pene.  
Ka tuwhera mai ngā whatu. Ka ara ake te  
māhunga. Kite atu ia i a Pene e puku kata ana.



“E hoa!” te katakata a Ngatai. “Ka rawe kē tēnei mahi!” Ka katakata a Ngatai ki a Pene.

“Iā, hū!” tā rāua ūmere. Ka makere atu rāua i te taura rere, takapore haere ai ki te papa, ki reira puku kata ai.



“Tēnā hei āpōpō ka pakanga anō tātou, nē?”  
tā Pene.

“Tautoko!” te kupu whakaae a Ngatai.



## He Kupu Whakamārama

- ākuanei koe i a au** He momo kīwaha tēnei. Hei whakatūpato i tētahi mō āna mahi hōhā.
- kūhine** Ki te **kūhine** tētahi, ka amuamu ia.
- kipakipa** Ki te **kipakipa** tētahi, ka tere te haere.
- whetē** Ki te **whetē** tētahi, whakamau tāna titiro ki tētahi atu.





# Te Tākaro Kaipara



Ko ngā kōrero nā Kararaina Uatuku  
Ko ngā pikitia nā Darcy Solia

NGĀ KETE KŌRERO



This publication uses vegetable based inks and environmentally responsible paper produced from Forest Stewardship Council® (FSC®) certified, Mixed Source pulp from Responsible Sources.



Paper produced using Elemental Chlorine Free (ECF) and manufactured under the strict ISO14001 Environmental Management System.

## **Te Tākaro Kaipara**

I whakaputaina tuatahitia tēnei pukapuka mō Te Tāhuhu o te Mātauranga e  
Huia Publishers 2005  
Pouaka Poutāpeta 12-280  
Te Whanganui-a-Tara, 6144  
Aotearoa  
[www.huia.co.nz](http://www.huia.co.nz)

He mea whakaputa tēnei tānga e Te Tāhuhu o te Mātauranga, 2019

Manatārua i ngā kōrero © Kararaina Uatuku 2005  
Manatārua i ngā pikitia © Darcy Solia 2005  
Manatārua i tēnei pukapuka © Te Tāhuhu o te Mātauranga 2005  
Pūmau te mana.

ISBN 978-1-77663-190-2

Ka wātea tuihono he rauemi tautoko me tētahi i-pukapuka mā te pouako  
mō tēnei pukapuka i [www.kauwhatareo.govt.nz](http://www.kauwhatareo.govt.nz)

Ki te hiahia koe ki ētahi atu kape o tēnei rauemi (nama take 63190), whakapā mai ki:  
Te Ratonga Kiritaki a Te Tāhuhu o te Mātauranga Waea koreutu 0800 660 662  
Īmēra: [orders@thechair.minedu.govt.nz](mailto:orders@thechair.minedu.govt.nz)  
Me tonu mai rānei mā te ipurangi ki [www.thechair.co.nz](http://www.thechair.co.nz)

# Te Tākaro Kaipara



Ko ngā kōrero nā Kararaina Uatuku  
Ko ngā pikitia nā Darcy Solia

“Maranga, e Pare. Ko ngā tākaro kaipara i tēnei  
rā i te kura,” te karanga a Māmā.

“Wawata katoa au ka heke mai te marangai,  
kia whakakorehia ngā tākaro kaipara,”  
te whakaaro o Pare.

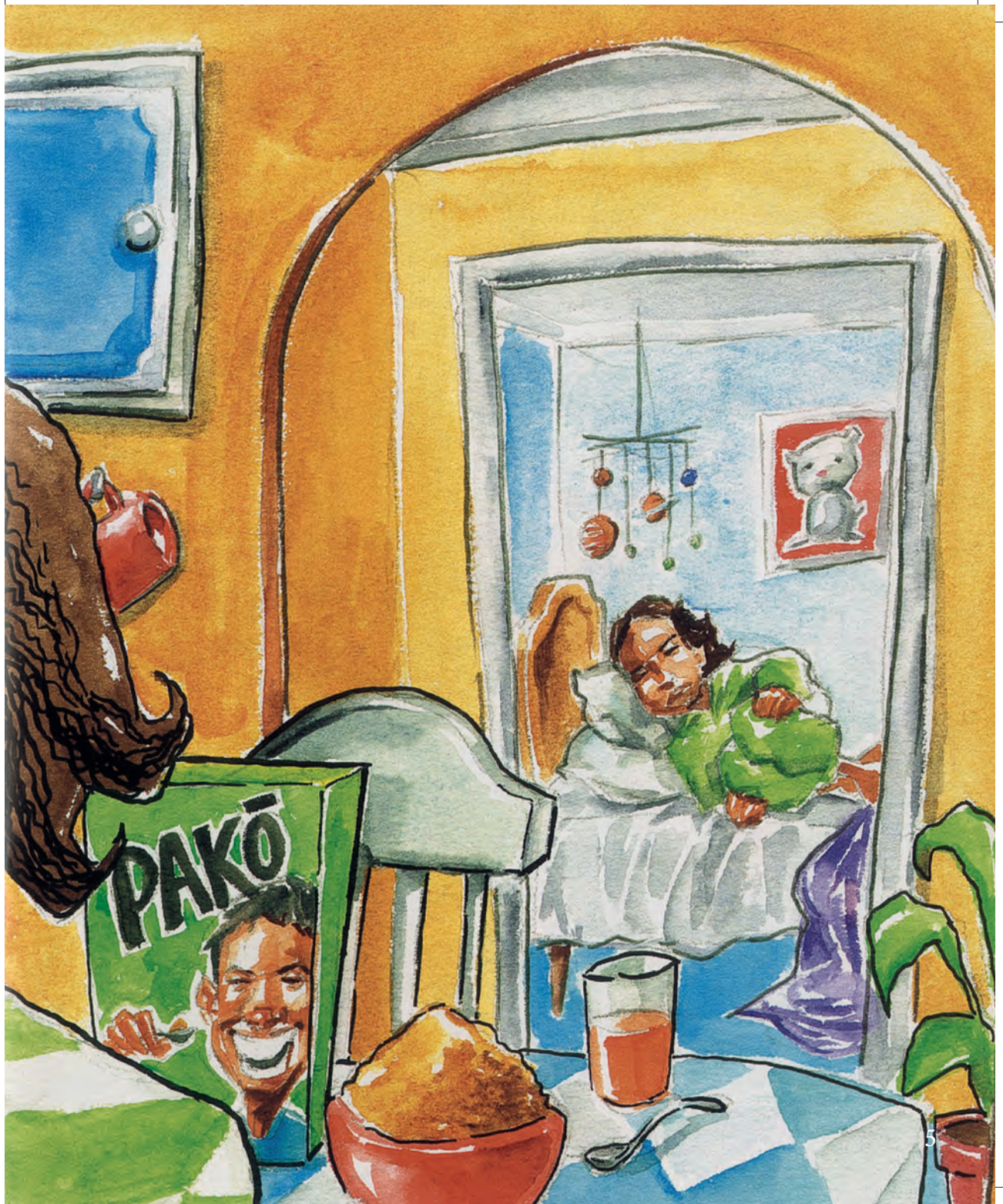


Kore rawa a Pare e rata atu ki te tākaro. Ehara i te mea he māngere ia. Engari, he tere ake ngā tamariki i roto i tōna akomanga i a ia. Ā, i ia tau, ko Pare te mea kei muri noa atu e haramai ana. Ā, whakatoī ana ngā tamariki ki a ia.

“Haramai ki te kai, e Pare,” te karanga a Māmā.

“E Mā, kei te mamae tōku puku,” te whakahoki a Pare.

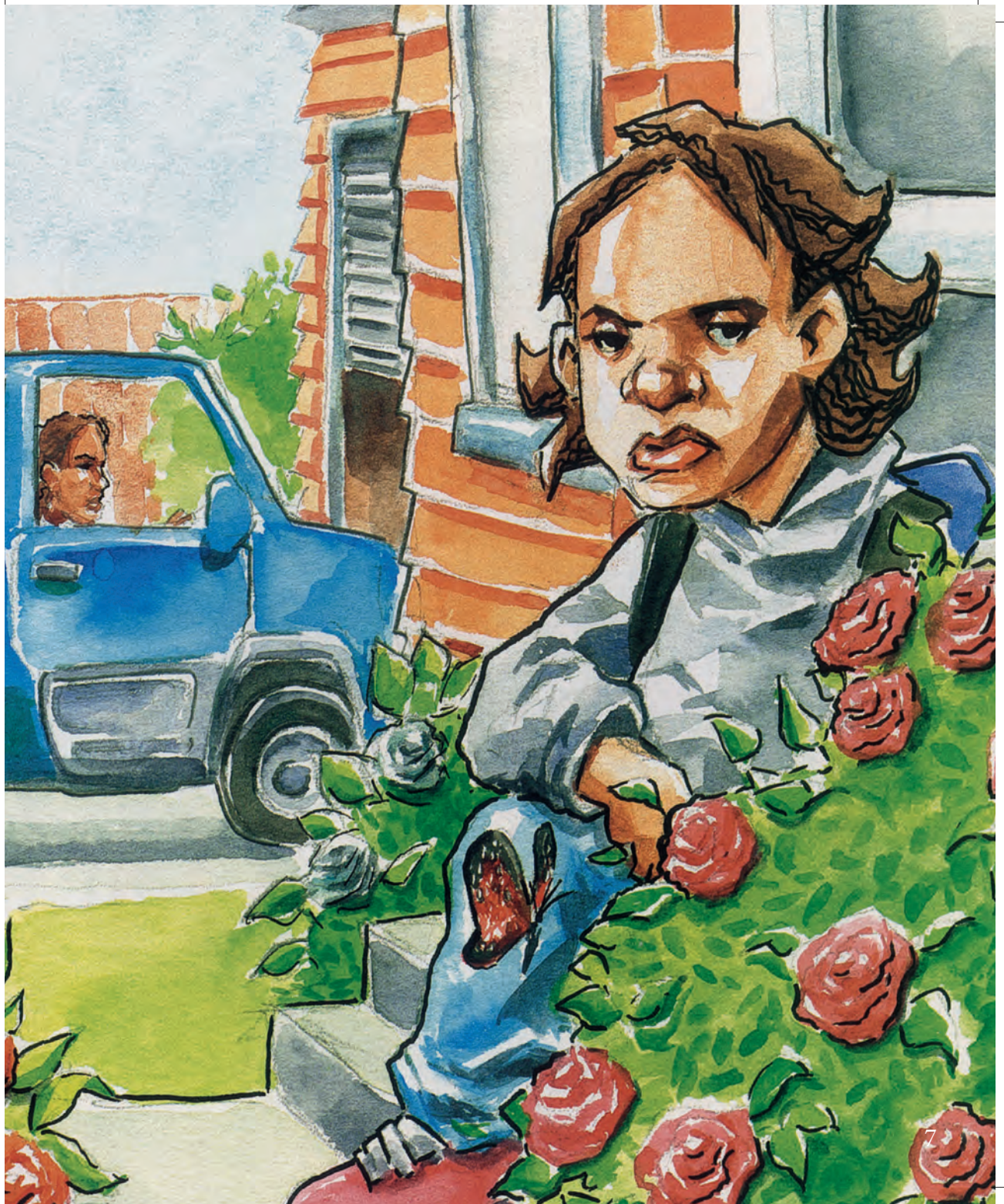
“E Kō, i pēnei anō koe i tērā tau. Kia tika, kia tere, kia rite, nē,” te akiaki a Māmā.





Auē, nā te roanga o ngā kōrero i hipa kē te pahi. Koa ana a Pare. Engari, kāore a Māmā i te koa. Ka tīkina te waka e Māmā kia kawea tāna kōtiro ki te kura.





I a rāua e haere ana i te ara ka rongō a Māmā i te auē o tāna kōtiro. “E Pare, kāti te māharahara. I a au e tamariki ana ko au te pukunati o te kura, mai i te rā tuatahi ki te tau tuawhitu. Ahakoa te tākaro ka nui tōku whakamā. Engari, ia rā, i kī mai tōku kuia, ‘E te tau, kāre he kōtiro he rite tōna ataahua ki tōhou.’ Whakapono mārika ana au ki aua kupu!”



“Kaua e aro atu ki ngā tamariki whakatoī.  
Ko te mea nui ka tutuki pai i a koe taua mahi,”  
te kōrero a Māmā.

“Nē. Engari, kei roto koe i ngā tākaro katoa,”  
te whakahoki ohorere a Pare.

“Āe, engari nā tōku pukunati, ko au anō tērā  
kei muri noa atu e haramai ana. Ka aroha kē te  
whakatoī o ngā tamariki ki a au,” te kī a Māmā.



“Kāre koe i karo i ngā tākaro?” te pātai atu  
a Pare.

“Āe, i ngā wā katoa. Engari i tētahi rā, ka kite  
au i tētahi tamaiti he mate huangō. Ahakoa ko  
ia te tamaiti whakamutunga, i kaha ia kia tae  
atu ki te mutunga. Ka whakaaro ake au mēnā  
ka taea e ia, ka taea anō hoki e au.”





“Āe, kātahi te kōrero whakatenatena ko tēnā.  
Ka kuhu atu au ki roto i ngā tākaro kaipara,  
engari wareware ana au ki te mau mai ōku  
kākahu kaipara,” te kī a Pare.

“Kei te pai. Inapō, nāku tonu i rau atu tētahi  
tīhāte me te tarau poto ki roto i tāu tūeke.  
Tirohia ki raro rawa.” Ka menemene mai te  
māmā o Pare. Ka menemene atu a Pare.



“E Mā kei runga noa atu koe,” te mihi atu  
a Pare.



## He Kupu Whakamārama

**māharahara**

Ki te **māharahara** tētahi,  
ka raruraru ōna whakaaro.

**pukunati**

He kupu anō te **pukunati** mō  
te mōmona.

**whakatenatena**

Ko te kōrero **whakatenatena**  
he kōrero whakakaha i tētahi  
kia whai ki tāna i hiahia ai.



# He Pai Te Mahi Tahi



Ko ngā kōrero nā Peti Nohotima  
Ko ngā pikitia nā Scott Pearson

NGĀ KETE KŌRERO



This publication uses vegetable based inks and environmentally responsible paper produced from Forest Stewardship Council® (FSC®) certified, Mixed Source pulp from Responsible Sources.



Paper produced using Elemental Chlorine Free (ECF) and manufactured under the strict ISO14001 Environmental Management System.

## **He Pai Te Mahi Tahi**

I whakaputaina tuatahitia tēnei pukapuka mō Te Tāhuhu o te Mātauranga e  
Te Pou Taki Kōrero 2003  
Te Whanganui-a-Tara  
Aotearoa

He mea whakaputa tēnei tānga e Te Tāhuhu o te Mātauranga, 2020

Manatārua i tēnei pukapuka © Te Karauna 2020  
Pūmau te mana.

ISBN 978-1-77550-613-3

Ka wātea tuihono he rauemi tautoko me tētahi i-pukapuka mā te pouako  
mō tēnei pukapuka i [www.kauwhatareo.govt.nz](http://www.kauwhatareo.govt.nz)

Ki te hiahia koe ki ētahi atu kape o tēnei rauemi (nama take 50613), whakapā mai ki:  
Te Ratonga Kiritaki a Te Tāhuhu o te Mātauranga Waea koreutu 0800 660 662  
Īmēra: [orders@thechair.minedu.govt.nz](mailto:orders@thechair.minedu.govt.nz)  
Me tono mai rānei mā te ipurangi ki [www.thechair.co.nz](http://www.thechair.co.nz)

# He Pai Te Mahi Tahī



Ko ngā kōrero nā Peti Nohotima  
Ko ngā pikitia nā Scott Pearson





Kei te wao māota o Rehutai tētahi whānau tūrehu e noho ana. Ko Wareware te mātāmua. Kātahi nei tētahi tūrehu ātaahua. Mohimohi ana tōna kiri, ānō nei ko te puāwai o te kōwhai. Pīataata ana ōna karu, ānō nei he whetū e kanapa ana.



Ko Tōmuri te tuarua. Arā kē hoki ngā painga o Tōmuri.  
Rite tonu te reo tioriori o Tōmuri ki tō te korimako e  
kōrihi ana i te atatū. Ko te pioi o tōna tinana ānō nei  
ko te raupō e piupiu ana i roto i te hau.



Nā, ko te pōtiki ko Kamakama. Kei a Kamakama ngā mea katoa, te ātaahua, te pai o te tinana, me te koi o te hinengaro. He kamakama ki te mahi, he kamakama hoki ki te kōrero. Nā tōna kamakama rite tonu ki te wairere tōna tere.



I tētahi rangi, ka tona ngā tokotoru nei e  
tō rātou whaea kia haere ki te kato pikopiko,  
nā te mea kei te haere mai tō ratou matua kēkē.  
Ko te wāhi tino pai te tipu o te pikopiko kei roto  
rā anō i te wao o Rehutai.

“Kaua e wareware,” te kī a Māmā, “kia āta mahi  
tahi, haere tahi, kia tūpato hoki ki a Niho Tetē, nē!”

“Āe, e Mā,” tā rātou whakautu.



Kāore i roa ka mahue haere a Wareware rāua ko Tōmuri i a Kamakama. Kei mua kē ia e kōkiri haere ana. Kei te tī, kei te tā.

“E hoa Kamakama, he aha te kī a tō tātou māmā?”

“Kia āta mahi tahi, kia haere tahi, kia tūpato ki a Niho Tetē,” tā Kamakama.

“Nō reira?” tā Tōmuri.

“Ana, kia tere Tōmuri. Koinā tō mate, he āta haere nōu ka tōmuri tātou.”



He pai tonu te tōmuri i ētahi wā te whakaaro  
o Tōmuri.

“Pēhea ki a koe, Wareware?” tā Kamakama.

“He aha nei tā tātou kaupapa?” tā Wareware.

Titiro korotaha ana a Tōmuri ki tōna tuakana.

“Auē, hei aha noa iho,” tā Kamakama,  
“kia tere mai kōrua.”



Nāwai rā, kua pau haere te hau o Kamakama i te tino tere o tana rere ki mua. Kātahi ka noho i raro i te tī kouka ki te whakatā ki te tatari ki ōna tuākana. Warea ana e te moe. Hei taua wā, kei runga a Niho Tetē i te rākau e noho ana, e tetē mai ana. Mirimiri ana a Niho Tetē i ōna ringa.

“Ka pai hoki,” tāna kī. “Ko tētahi o ngā tūrehu pōrearea tēnei. Me huhuti rawa e au ōna parirau.”



Hukehuke ana te heke iho a Niho Tetē. E tuohu tonu ana ki te huhuti i ngā parirau o Kamakama, ka tae mai a Tōmuri rāua ko Wareware.

“Kamakama, Kamakama, e oho, e oho!” te tioro atu a te tokorua. Pūrere atu ana ngā tuākana ki te whakararu i a Niho Tetē.





I te kaha ohore o Kamakama kei runga hoki ia e whakararu ana i a Niho Tetē. Pakēpakē ana ngā parirau o ngā tokotoru ki te mähunga o Niho Tetē.

“Anā tō kai,” tā Tōmuri.

“E koe, e koe,” tā Wareware.

10 “Tō māreherehe,” tā Kamakama.



Nō te mutunga ka kī a Kamakama, “He tika kē ngā tohutohu a Māmā. Mēnā kāre kōrua, kua kore kē ōku parirau. He pai tonu te mahi tahi nē rā?”

“He tika tonu,” tā Tōmuri rāua ko Wareware, “Pēnā i riro ō parirau kua rite koe ki a Niho Tetē. He noho rākau tō mahi.”

“Uuuu!” tā Kamakama me te wiri anō o tana tinana.

“Kei te haere anei tātou ki whea? He aha anei tā tātou kaupapa?” te pātai a Wareware. Pakaru ana te kata a ngā tūrehu me te awhiawhi anō i a rātou.

# He Takinga

He whakaohoho:

Titiro ki te uhi o te pukapuka

- Ki ōu whakaaro, he aha hoki te kaupapa o tēnei pukapuka? (Mahi tahi te mea nui, āta whakarongo.)
- Kei te aha ngā tokotoru?
- Titiro ki te tapanga. Tēnā kōrero mai i te tikanga o te mahi tahi.
- Pēhea ai tā koutou mahi tahi i te kāinga, i te kura hoki?



## Pānui ki

Pānui ki ngā tamariki. Me whakarongo, me titiro ngā tamariki.

## Pānui i

Pānui me ngā tamariki; Whakaurua mai ngā ākonga ki te pānui i ētahi o ngā rerenga:

- te whakarārangi o te tokotoru, mātāmua, tuarua, pōtiki
- whakaatu i ngā tohu, arā ko te tohu pātai, ko te kīwaha, piko, ira kati, tohu korero me pēhea hoki te whakaahua ā-reo i nga tohu?

## He kete kupu

Me whakarite te rārangi kupu mai i te kupu taka, ki runga i tētahi kāri hei titiro mā ngā tamariki ia rā, hei tuhi ki roto i ētahi rerenga kōrero.

## He kīwaha

Tō māreherehe  
Anā tō kai  
E koe, e koe  
(he aha i kī ai i ērā kīwaha?)

- Whakaahua ā-reo i ngā āheinga o ngā kīwaha me ētahi kīanga.

## Hei Mahi

- Tuhia tētahi whakamārama mo tētahi āhua o Kamakama, o Tōmuri, o Wareware, o Niho Tetē. Whakaahuatia mai ō rātou pikitia.
- Whakamahia ēnei kupu hukehuke, pioi, kōkiri, pōrearea. (Tuatahi ā-waha, tuarua ā-tuhi, i roto i tētahi rerenga kōrero.)
- Kōrero mai i tētahi āhua ō tētahi o tōu whānau, arā, tō tuakana, teina, tuahine rānei pea, he aroha, he whakatoī, he manaaki, he mārohirohi, he hiamoe, he kore taringa, he hikaka (he whakamahi i ngā tūāhua).
- Tuhia mai tētahi kōrero hei whakamahi i te kīwaha “Anā tō kai”.

## He Kupu Whakamārama

<b>hukehuke</b>	Ko te mea <b>hukehuke</b> he mea tino tere te haere.
<b>kōrihi</b>	Ko te <b>kōrihi</b> te tanga a te korimako.
<b>mohimohi</b>	Ko te kiri <b>mohimohi</b> he kiri ngāwari ki te pā atu.
<b>niho tetē</b>	Ko te <b>niho tetē</b> he niho nui ka toro whakamua.
<b>pōrearea</b>	Ko te mea <b>pōrearea</b> he mea ka whakahōhā i te tangata.
<b>warea</b>	Ki te <b>warea</b> tētahi, ka riro te wairua me te hinengaro anō nei kua moe.



# Te Puna Wai o Kauila



Ko ngā kōrero nā Tamahou Temara  
Ko ngā pikitia nā Jennifer Cooper

NGĀ KETE KŌRERO



This publication uses vegetable based inks and environmentally responsible paper produced from Forest Stewardship Council® (FSC®) certified, Mixed Source pulp from Responsible Sources.



Paper produced using Elemental Chlorine Free (ECF) and manufactured under the strict ISO14001 Environmental Management System.

## **Te Puna Wai o Kauila**

I whakaputaina tuatahitia tēnei pukapuka mō Te Tāhuhu o te Mātauranga e Te Pou Taki Kōrero 2007  
Te Whanganui-a-Tara  
Aotearoa

He mea whakaputa tēnei tānga e Te Tāhuhu o te Mātauranga, 2020

Manatārua i ngā kōrero © Tamahou Temara 2007  
Manatārua i ngā pikitia © Te Karauna 2007  
Manatārua i tēnei pukapuka © Te Tāhuhu o te Mātauranga 2020  
Pūmau te mana.

ISBN 978-1-77550-596-9

Ka wātea tuihono he rauemi tautoko me tētahi i-pukapuka mā te pouako mō tēnei pukapuka i [www.kauwhatareo.govt.nz](http://www.kauwhatareo.govt.nz)

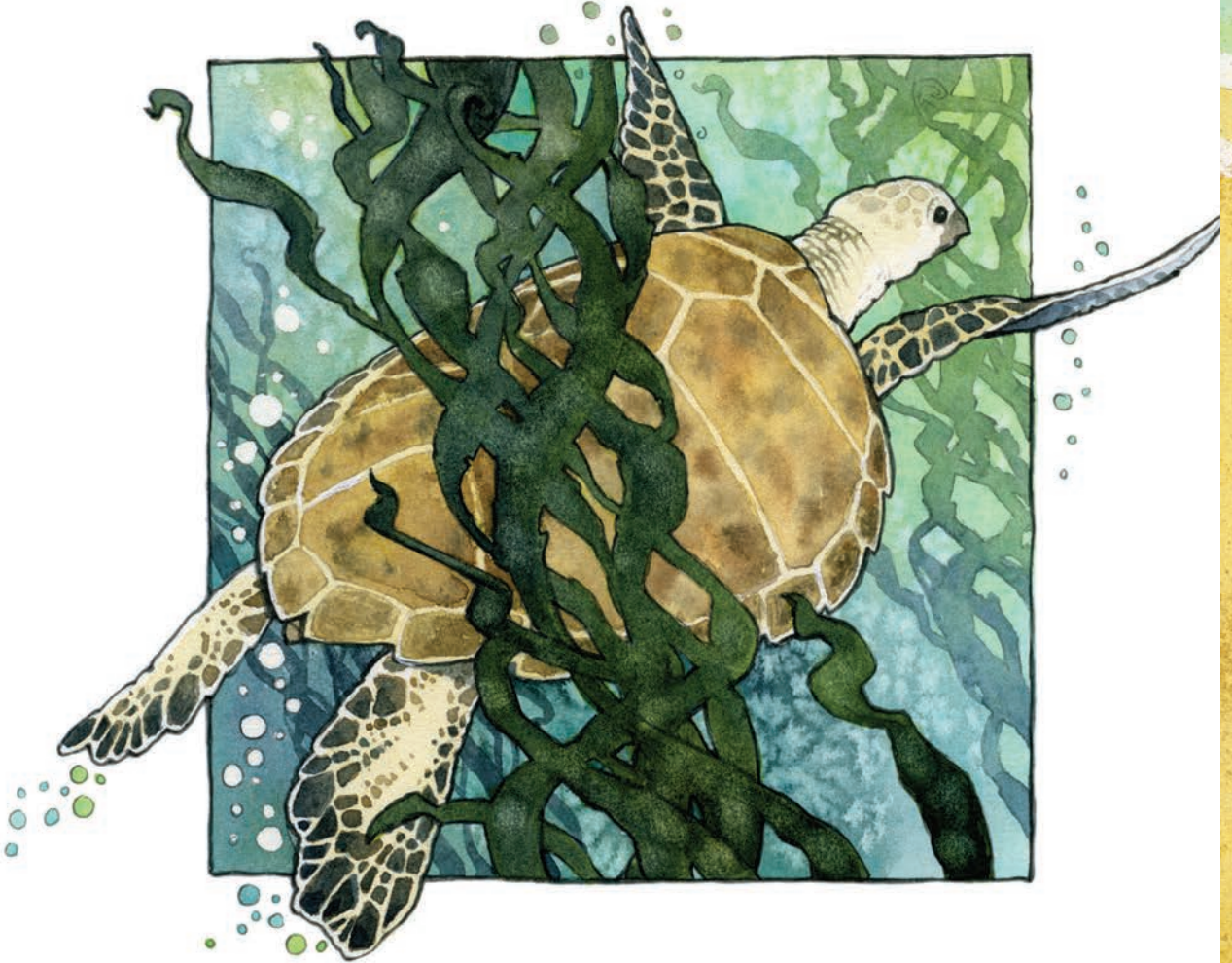
Ki te hiahia koe ki ētahi atu kape o tēnei rauemi (nama take 50596), whakapā mai ki:  
Te Ratonga Kiritaki a Te Tāhuhu o te Mātauranga Waea koreutu 0800 660 662  
Īmēra: [orders@thechair.minedu.govt.nz](mailto:orders@thechair.minedu.govt.nz)  
Me tono mai rānei mā te ipurangi ki [www.thechair.co.nz](http://www.thechair.co.nz)

# Te Puna Wai o Kauila



Ko ngā kōrero nā Tamahou Temara  
Ko ngā pikitia nā Jennifer Cooper





Nō Hawai'i tēnei kōrero tuku iho mō tētahi honu.  
Ko Kauila tōna ingoa.



I tētahi pō atarau, ka pari ngā tai o Punalu'u.  
Ka puta mai a Honupo'okea ki uta ki te  
whakawhānau i āna hēki.



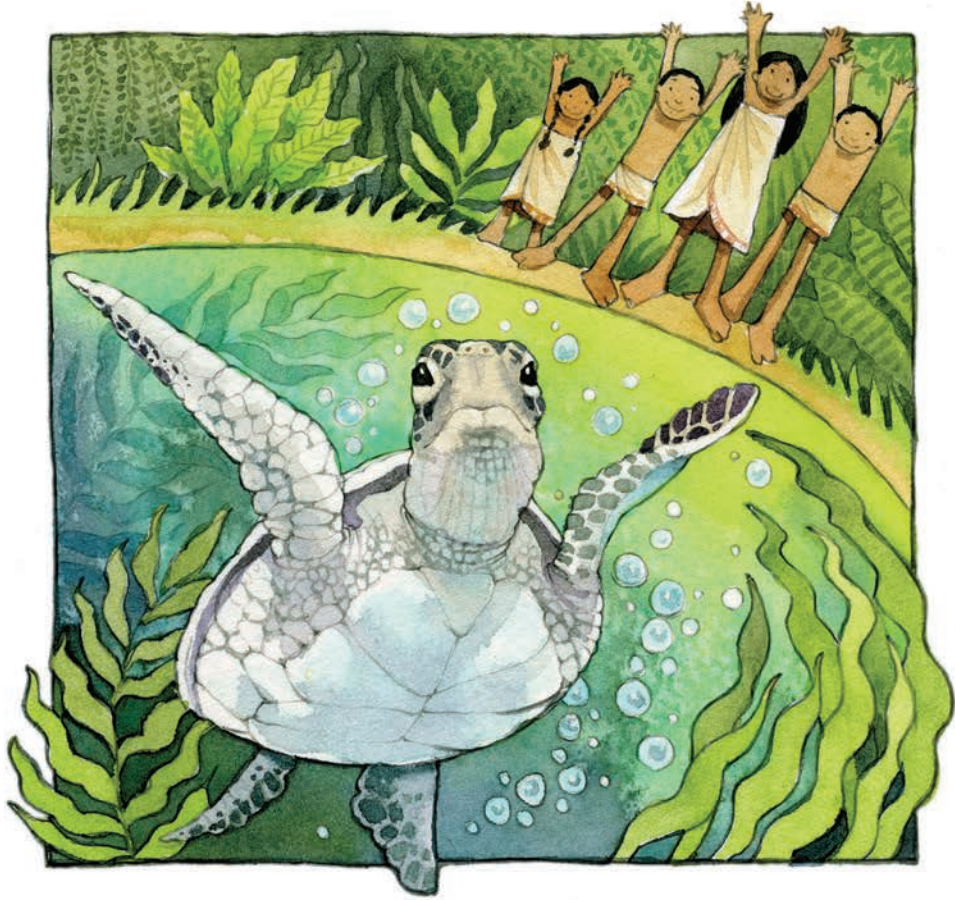
Ka kari ia i tētahi rua hei wāhi haumaru mō ngā hēki. Engari, kotahi anake te hēki i whānau mai. Ka ūhia atu e ia ngā kirikiri ki te rua.



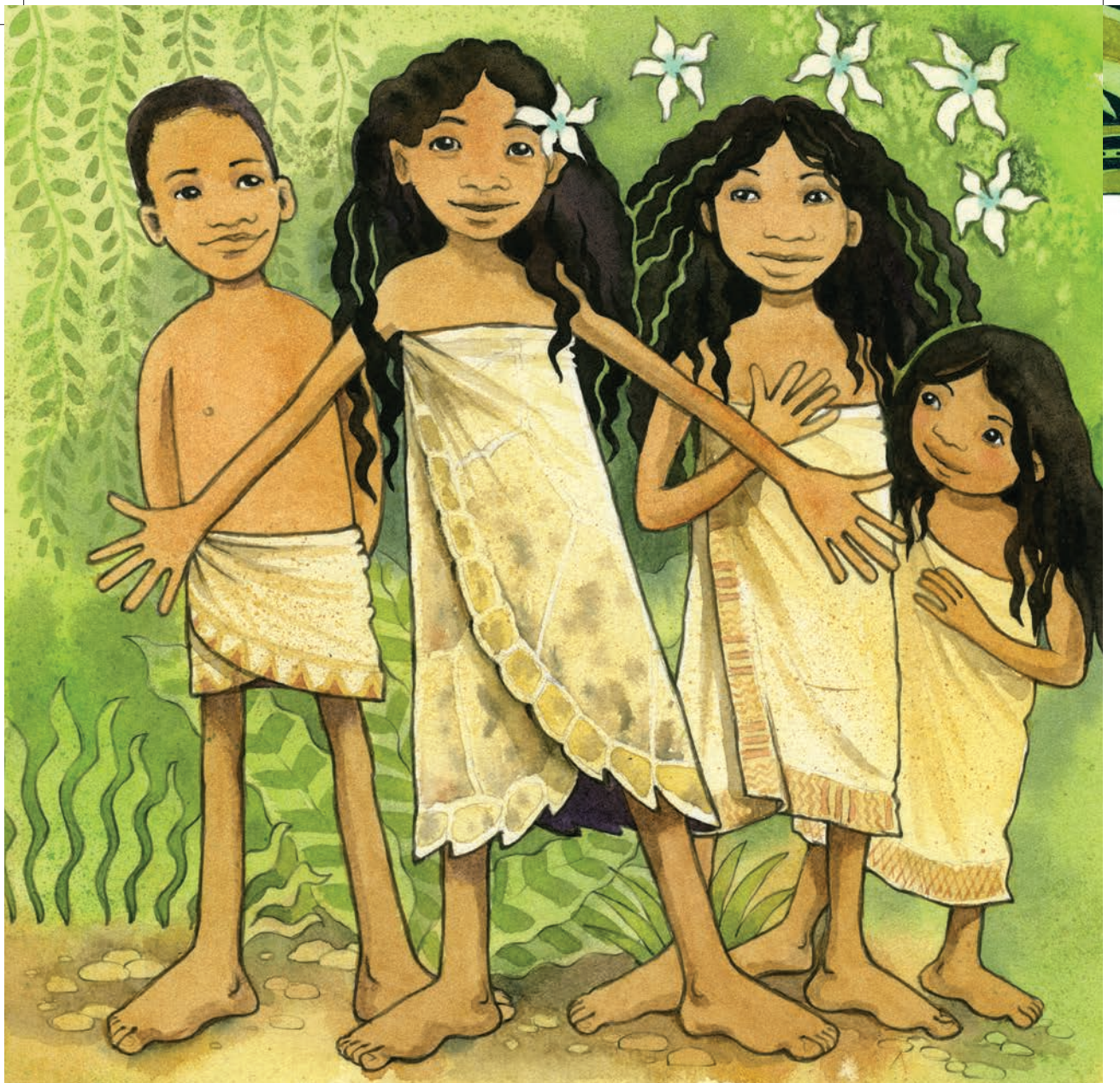
I mua i tana wehenga atu, ka kari anō ia i tētahi atu rua. Ka hoki atu ia ki tōna hoa, a Honu'ea, e tatari mai ana ki a ia i te moana. He atua a Honupo'okea rāua ko Honu'ea.



Ka paopao mai te hēki, ka whānau mai ko Kauila.



Ka noho atu ia ki tērā atu rua i karia e tōna whaea.  
Ka tapaina te ingoa o te rua ko Te Puna Wai  
O Kauila. E ai ki ngā kōrero tuku iho, ko Kauila  
te kaitiaki o ngā tamariki.



Ka haere atu ana ngā tamariki ki te puna,  
kua huri a Kauila hei kōtiro kia pai ai tana  
tākaro me ngā tamariki.



I ētahi wā, kua haere rātou ki te hopu  
kōura māwhitiwhiti, te hopu ika i taua puna.





Engari, ka wehe atu ana ngā tamariki, kua huri  
anō ia hei honu. Kua hoki atu a Kauila ki te puna.



Ka kite ana ngā tamariki i te wai e pupū ake ana,  
ka mōhio tonu rātou ko Kauila tērā e moe ana.



E kore e mimiti te aroha o te iwi ki a Kauila.  
Kua kore e pērā rawa te maha o ngā honu i ngā rā  
o mua. I ēnei rā, kei te whakapau kaha ngā iwi o  
Te Moana-nui-a-Kiwa ki te tiaki i ngā honu,  
nā te mea kua matemate haere rātou.

# He Kupu Whakamārama

**pō atarau**

Ko te **pō atarau** he pō e kaha whiti mai ana te marama.

