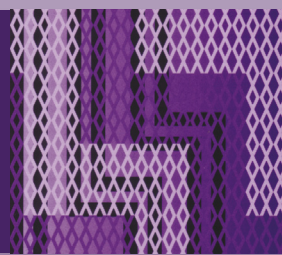


# Tikanga ā-lwi



# TIKANGA Ā-IWI

*“Kāore i kotahi te whakahaere o ngā Tikanga ā-Iwi. He iwi anō me ōna tohunga me ōna tikanga me āna whakahaere. Hiki atu he iwi, pērā tonu. Nō reira, kia mau koe ki ōu ake .... Mā ō rātou uri e mau ō rātou nā kōrero. Engari kia mau koe ki ngā kōrero a ōu mātua, a ōu tūpuna. Ina ka tika, ka waiho mai ētahi mātauranga hei taonga mōu.”*

*[Te Whatahoro, 1865]*

## He aha te Tikanga ā-Iwi?

I puta ake te wairua o te Tikanga ā-Iwi i roto i ngā kupu a Te Whatahoro, arā, te āta titiro ki ngā āhuatanga huhua o te tangata e mārama ai te ākongā ki tōna ao. Ka tirohia ngā mahi a te tangata hei whakatutuki i ōna matea kikokiko, matea pāpori, matea ngākau, matea wairua hoki.

## Te hanganga o te Tikanga ā-Iwi

E rima ngā whenu o te Tikanga ā-Iwi.

- Te Whakaritenga Pāpori me te Ahurea
- Te Ao Hurihuri
- Te Wāhi me te Taiao
- Ngā Mahinga Ohaoha
- Te Takanga o Te Wā



## Ngā hua o te ako i te Tikanga ā-Iwi?

I roto i te Tikanga ā-Iwi ka whakawhanaketia e te ākongā tōna mōhio ki ngā āhuatanga porihanga me tōna mārama ki ngā āhuatanga whanonga tangata.

Mā tēnei, ka taea e te ākongā te uru i runga i te mōhio, i te haepapa hoki, ki ngā mahi waihanga porihanga.

Ko te Tiriti o Waitangi me ōna āhuatanga katoa te tāhū o te Tikanga ā-Iwi. E mārama ai te ākongā ki tōna ake tūrangawaewae mā te arotahi ki ngā tāngata, ngā tūāhua me ngā whakaawenga i waihanga ai te porihanga o Aotearoa.

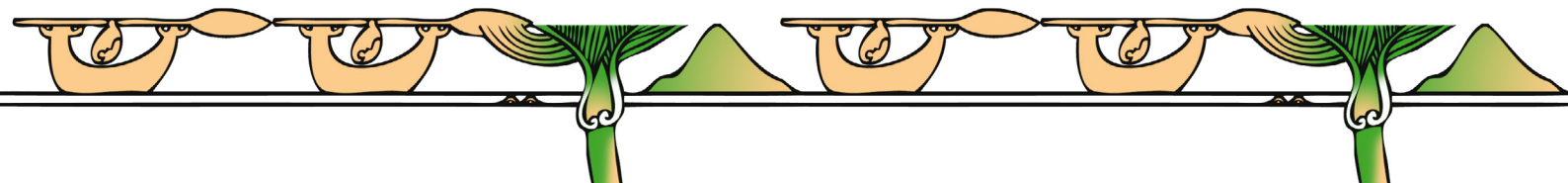
Ka titiro hoki te ākongā ki te noho a ngā iwi o tāwāhi, arā, ki tā rātou nei titiro ki te ao.

Ka tūhura hoki te ākongā i ngā take o te wā kia mārama ai ia ki ngā tūāhua me ngā tāngata tāpua o tēnei ao.

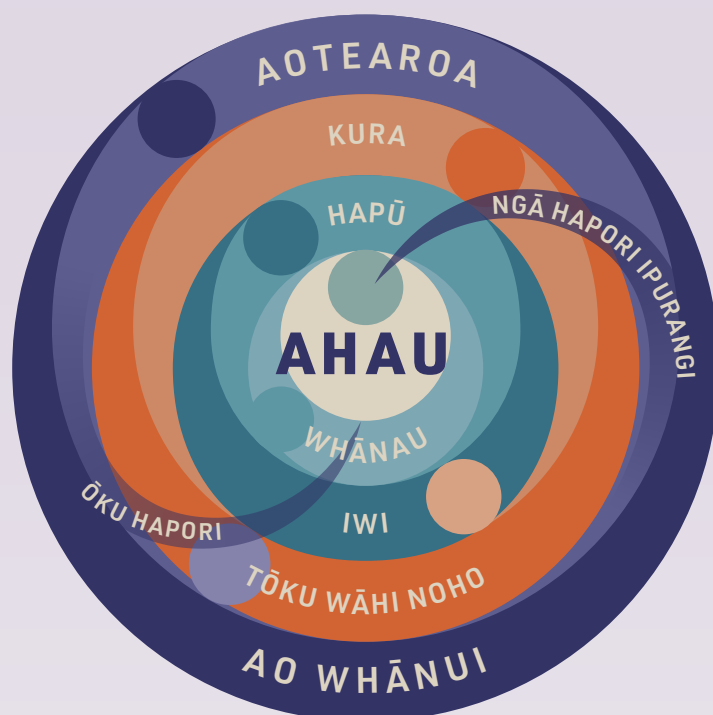
He mea tino whaitake kia whiwhi mōhiotanga, māramatanga hoki ngā ākongā ki tō rātou ake whenua tipu, porihanga, taiao hoki arā e kīia nei ko Aotearoa. I ia tau, me whai huarahi rawa te ākongā ki te whakatipu i tōna mōhiotanga me tōna māramatanga ki ngā tāngata, ngā tūāhua, ngā awenga me ngā ākinga nāna i waihanga ai a Aotearoa i roto i ngā rautau o mua, ā, mohoa noa nei.

Mā te ako i ngā kōrero tuku iho o Aotearoa ka whakawhanake te ākongā i tōna māramatanga ki:

- te mana ahurei o te iwi Māori hei iwi taketake ki Aotearoa;
- te whaitake kia ora tonu ai te reo Māori, ngā tikanga Māori me ngā kōrero tuku iho Māori i runga i te tirohanga o te ao Māori;
- te maha o ngā tirohanga e pā ana ki ngā tūāhua me ngā take o mua iho, o tēnei wā hoki;
- ngā ariā o te whānau, te hapū, te iwi me te hāpori me te hononga o ēnei ki te tuakiri Māori takitahi, takimano hoki;
- ngā take ā-waho, ā-roto i Aotearoa e pāpā ana ki te whakatinanatanga o ngā wawatatanga pāpori, tōrangapū, ahurea, ohaoha hoki o te iwi.



# TIKANGA Ā-IWI



## Ngā Mātāpono Mātauranga Māori o te Tikanga ā-Iwi

Nō mai rā anō te mātauranga Māori. E mau tonu nei, ā, haere ake nei. Ko te mātauranga Māori he kete mātauranga e ora ana, e tipu ana hei whakamana i te mātauranga me ngā tikanga, hei mātua whakarite kia rukuhia e te ākonga ngā āhuatanga hōhonu o taua kete mātauranga.

## Te huarahi ako i te Tikanga ā-Iwi

Ko te huarahi ako i te Tikanga ā-Iwi ko te tukanga o te pakirehua pāpori. Mā roto i tēnei tukanga ia whai wāhi te ākonga ki:

- Te patapatai, te tukatuka me te whakahiato mōhiohio me te whakawhiti kitenga (Pakirehua);
- Te tūhura i ngā rerekētanga o te titiro, te whakaaro me te uara, me ngā take mō ēnei (Te Tūhura Uara);
- Te tiro tiro take, te tāutu me te arotake otinga, me te whakatau huarahi hei whakamatara take pāpori (Te Koringa Pāpori).

## Te Tīrewa Ako mō Te Takanga o Te Wā

Ko tā ngā tīrewa ako o Te Takanga o te Wā he whakaatu i ngā kauneke ako mō te ākonga. Tautohu ai ngā kauneke ako nei i ngā mōhiotanga, ngā māramatanga me ngā pūkenga hoki kia mātua mau i te ākonga e angitu ai tāna ako.

- Kei te mōhio ahau nō hea ahau, nō wai hoki ahau.
- Kei te mōhio ahau ki ngā kōrero tuku iho o te takiwā e noho nei au.
- Kei te mōhio ahau ki ō mātou hononga ki takiwā kē.
- Kei te mōhio ahau ki ngā kōrero tuku iho o Aotearoa.



## Te Whakaritenga Pāpori me te Ahurea

*Whiria te kaha  
tūātinitini,  
whiria te kaha  
tūāmanomano.  
Nō ngā tūpuna, tuku  
iho, tuku iho.*

## Te Ao Hurihuri

*E tama, e hine, tangata  
i ākona ki te whare,  
tū ana ki te marae,  
tau ana.*

## Te Wāhi me te Taiao

*Kotahi tonu te matua  
o te tangata Māori, ko  
Ranginui e tū nei,  
ko Papatūānuku e  
takoto nei.*

## Ngā Mahinga Ohaoha

*E kore e ngaoko te  
rākau ki te tīkina i te  
pūtake whakangaoko ai,  
engari, me tiki ki te  
matamata.*

### TAUMATA 1

1.1 Ka whakamārama  
i ngā take e uru atu  
ai te tangata  
ki te rōpū.

1.1 Ka whakaahua  
i ngā kaupapa  
me ngā tūāhua  
whakahirahira o  
tōna ao.

1.1 Ka whakamārama  
i ngā āhuatanga  
tūturu me ngā  
āhuatanga ahurea  
o tētahi wāhi.

### TAUMATA 2

2.1 Ka whakamārama  
i ngā tūranga me  
ngā haepapa ka  
kaweā e te tangata  
i roto i te rōpū.

2.2 Ka whakamārama  
i ngā āhuatanga  
ahurea me ngā tuku  
ihotanga o tōna ake  
iwi, me ō ētahi atu  
iwi hoki.

2.1 Ka whakamārama  
i ngā take me ngā  
huarahi e whakaaro  
nuitia ai e te tangata  
ngā wā o mua.

2.1 Ka whakaahua i te  
whakaawenga o ngā  
mahia a te tangata i  
te wāhi me te taiao,  
me te whakaawenga  
o te wāhi me te  
taiao i ngā mahia a  
te tangata.

## Te Whakaritenga Pāpori me te Ahurea

*Whiria te kaha  
tūātinitini,  
whiria te kaha  
tūāmanomano.  
Nō ngā tūpuna, tuku  
iho, tuku iho.*

## Te Ao Hurihuri

*E tama, e hine, tangata  
i ākona ki te whare,  
tū ana ki te marae,  
tau ana.*

## Te Wāhi me te Taiao

*Kotahi tonu te matua  
o te tangata Māori, ko  
Ranginui e tū nei,  
ko Papatūānuku e  
takoto nei.*

## Ngā Mahinga Ohaoha

*E kore e ngaoko te  
rākau ki te tīkina i te  
pūtake whakangaoko ai,  
engari, me tiki ki te  
matamata.*

## TAUMATA 3

3.1 Ka whakamārama  
i ngā huarahi e  
whiwhi ai, e kawē ai  
hoki, te kaiārahi  
i tōna tūranga.

3.2 Ka whakamārama  
i ngā take e  
whakarite ai, e  
whakamahi ai  
hoki, te tangata i te  
ritenga me te ture.

3.3 Ka whakamārama  
i te rerekētanga o  
ngā mahi a ngā rōpū  
ahurea, ahakoa e  
whakaata tonu ana  
ēnei i ētahi pūtake  
ōrite.

3.1 Ka whakamārama  
i te whakaawenga  
o ngā whakaaro  
me ngā mahi a te  
tangata i te oranga  
o ētahi atu i ngā wā  
o mua.

3.2 Ka whakamārama i  
ngā huarahi e taea  
e te takitahi me te  
rōpū te urupare ki  
te panoni.

3.1 Ka whakaahua  
i ngā huarahi i  
pāhekoheko ai, i  
urutau ai te tangata  
ki te taiao i ngā wā  
o mua.

3.2 Ka whakamārama  
i ngā take me ngā  
huarahi e whakaatu  
ai te tangata i tōna  
hononga ki tētahi  
tino wāhi, ki tētahi  
tino taiao.

## Te Whakaritenga Pāpori me te Ahurea

*Whiria te kaha  
tūātinitini,  
whiria te kaha  
tūāmanomano.  
Nō ngā tūpuna, tuku  
iho, tuku iho.*

## Te Ao Hurihuri

*E tama, e hine, tangata  
i ākona ki te whare,  
tū ana ki te marae,  
tau ana.*

## Te Wāhi me te Taiao

*Kotahi tonu te matua  
o te tangata Māori, ko  
Ranginui e tū nei,  
ko Papatūānuku e  
takoto nei.*

## Ngā Mahinga Ohaoha

*E kore e ngaoko te  
rākau ki te tīkina i te  
pūtake whakangaoko ai,  
engari, me tiki ki te  
matamata.*

## TAUMATA 4

4.1 Ka whakamārama i te whakaritenga a te tangata i a ia anō hei urupare ki te mātātaki, ki te mōrearea rānei.

4.2 Ka whakamārama i ngā take me ngā huarahi e tukuna iho ai e te takitahi me ngā rōpū, o rātou ahurea, o rātou tuku ihotanga, kia mau pūmau.

4.1 Ka tautohu i ngā pūtake me ngā otinga o ngā tūāhua kua waihanga i te oranga o te tangata.

4.2 Ka whakaahua i ngā huarahi e tuhia ai, e maumaharatia ai ngā mahi o mua.

4.1 Ka whakamārama i ngā whakaatatanga o te wāhi i ngā pāhekohekotanga o te tangata ki te taiao i ngā wā o mua.

4.2 Ka whakamārama i ngā whaiwāhitanga me ngā mātātaki o te torotoro mō te tangata, te wāhi me te taiao.

4.1 Ka whakamārama i ngā take me ngā huarahi e rerekē ai te titiro me te whakamahi a te tangata i te rawa me ngā putanga iho o ēnei āhuatanga.

4.2 Ka whakamārama i ngā take me ngā huarahi e whai ai te takitahi me te rōpū kia tiakina ngā motika o te kaiwhakapeto.

## Te Whakaritenga Pāpori me te Ahurea

*Whiria te kaha  
tūātinitini,  
whiria te kaha  
tūāmanomano.  
Nō ngā tūpuna, tuku  
iho, tuku iho.*

## Te Ao Hurihuri

*E tama, e hine, tangata  
i ākona ki te whare,  
tū ana ki te marae,  
tau ana.*

## Te Wāhi me te Taiao

*Kotahi tonu te matua  
o te tangata Māori, ko  
Ranginui e tū nei,  
ko Papatūānuku  
e takoto nei.*

## Ngā Mahinga Ohaoha

*E kore e ngaoko te  
rākau ki te tīkina i te  
pūtake whakangaoko  
ai, engari, me tiki ki te  
matamata.*

## TAUMATA 5

5.1 Ka whakamārama i te whakaritenga o ngā pūnaha kāwanatanga, me te whakaawenga o ēnei i te āhua noho a te tangata.

5.2 Ka whakamārama i ngā huarahi i whakawhanaketia ai, i puritia ai, i urutautia ai, te tuakiri ahurea me te tuakiri ā-motu.

5.1 Ka whakamārama i te whakaawenga o ngā tūāhua o mua i ngā hononga i roto, i waenga hoki, i te rōpū, me te haere tonu o ēnei whakaawenga.

5.2 Ka whakamārama i ngā whakapono me ngā mahi a ngā tāngata o mua kua waihanga i te porihanga o Aotearoa.

5.1 Ka whakamārama i ngā take e neke haere ai te tangata ki wāhi kē, me ngā putanga iho o ēnei nekehanga ki te tangata me te wāhi.

5.2 Ka whakamārama i te papātanga o ngā huarahi whakahaere rawa ki runga i te whāoomotanga o te taiao.

5.1 Ka whakamārama i te papātanga o ngā whakataunga ohaoha ki runga i te tangata, te hāpori me te whenua.

5.2 Ka whakamārama i ngā huarahi e whakatairanga ai te tangata i te whanaketanga ohaoha mā te pakihi, te hinonga me te auahatanga.

## Te Whakaritenga Pāpori me te Ahurea

*Whiria te kaha tūātinitini, whiria te kaha tūāmanomano. Nō ngā tūpuna, tuku iho, tuku iho.*

## Te Ao Hurihuri

*E tama, e hine, tangata i ākona ki te whare, tū ana ki te marae, tau ana.*

## Te Wāhi me te Taiao

*Kotahi tonu te matua o te tangata Māori, ko Ranginui e tū nei, ko Papatūānuku e takoto nei.*

## Ngā Mahinga Ohaoha

*E kore e ngaoko te rākau ki te tīkina i te pūtake whakangaoko ai, engari, me tiki ki te matamata.*

## TAUMATA 6

### Tikanga ā-Iwi

### Hītori

### Matawhenua

### Ōhanga

- 6.1 Ko te mahi takitahi, ā-rōpū, ā-pūtahitanga rānei, ki te whakatairanga i te tōkeke pāpori me ngā motika tangata.
- 6.2 Ko te urutau me te rerekē haere o ngā ahurea, me ngā putanga iho o ēnei mō te porihanga.

- 6.1 Ko ngā pūtaketanga me ngā otinga o ngā tūāhua o mua i waihanga i te āhua noho a te iwi o Aotearoa.
- 6.2 He rerekē te titiro a te tangata ki ngā tūāhua o mua e whai tikanga ana ki Aotearoa.

- 6.1 He motuhake tonu ngā āhuatanga o te taiao tūturu me te taiao ahurea, ā, ka waihangatia ēnei e ngā tukanga whakaaauaha taurira mokowā.
- 6.2 He maha ngā ara pāhekoheko rerekē a te tangata ki tōna taiao.

- 6.1 Nā te mōmōhanga, ka whakatau tikanga ngā kaiwhakapeto, ngā kaiwhakanao me te kāwanatanga ka pā ki te porihanga o Aotearoa.
- 6.2 He taupuhipuhi ngā rāngai rerekē o te ōhanga o Aotearoa.



Te Whakaritenga Pāpori me te Ahurea	Te Ao Hurihuri	Te Wāhi me te Taiao	Ngā Mahinga Ohaoha
<i>Whiria te kaha tūātinitini, whiria te kaha tūāmanomano. Nō ngā tūpuna, tuku iho, tuku iho.</i>	<i>E tama, e hine, tangata i ākona ki te whare, tū ana ki te marae, tau ana.</i>	<i>Kotahi tonu te matua o te tangata Māori, ko Ranginui e tū nei, ko Papatūānuku e takoto nei.</i>	<i>E kore e ngaoko te rākau ki te tīkina i te pūtake whakangaoko ai, engari, me tiki ki te matamata.</i>

## TAUMATA 7

Tikanga ā-Iwi	Hītori	Matawhenua	Ōhanga
<p>7.1 Ka kawea, ka whakamahia e ngā hapori me ngā whenua o rātou haepapa me o rātou motika i roto i ngā horopaki ā-hapori, ā-whenua, ā-ao hoki.</p> <p>7.2 I ētahi wā, nā te rerekē o ngā whakapono me ngā ariā ahurea, ka tutū te puehu, ka puta te mānukanuka.</p>	<p>7.1 Ko ngā āinga me ngā rōpū o mua i whakaawe i ngā pūtaketanga me ngā otinga o ngā tūāhua o mua e whai tikanga ana ki Aotearoa.</p> <p>7.2 He rerekē ngā whakamārama a tēnā iwi, a tēnā iwi, mō ngā tūāhua e whai tikanga ana ki ngā tāngata o Aotearoa.</p>	<p>7.1 Ka rerekē haere ngā tauira tūturu, ngā tauira ahurea me ngā tukanga i te takanga o te wā, ā, ka rerekē anō te kōrahi mai i tēnā wāhi, ki tēnā wāhi.</p> <p>7.2 Kua rerekē haere ngā whakaaro me ngā hononga ki te taiao tūturu me te taiao ahurea.</p>	<p>7.1 Mā te ōhanga ka mārama ngā take ohaoha o Aotearoa i tēnei wā.</p> <p>7.2 Haere kōtui ai ngā take ohaoha kei Aotearoa nei.</p>

Te Whakaritenga Pāpori me te Ahurea	Te Ao Hurihuri	Te Wāhi me te Taiao	Ngā Mahinga Ohaoha
<i>Whiria te kaha tūātinitini, whiria te kaha tūāmanomano. Nō ngā tūpuna, tuku iho, tuku iho.</i>	<i>E tama, e hine, tangata i ākona ki te whare, tū ana ki te marae, tau ana.</i>	<i>Kotahi tonu te matua o te tangata Māori, ko Ranginui e tū nei, ko Papatūānuku e takoto nei.</i>	<i>E kore e ngaoko te rākau ki te tīkina i te pūtake whakangaoko ai, engari, me tiki ki te matamata.</i>

## TAUMATA 8

Tikanga ā-Iwi	Hītori	Matawhenua	Ōhanga
<p>8.1 Mā ngā whakapono tōrangapū e waihangatia te porihanga, ā, e rerekē ana te urupare a te takitahi, a te rōpū rānei ki ēnei whakapono tōrangapū.</p> <p>8.2 Ka whakaawe te āhua o te whakahou i ngā motika, ngā tūranga me ngā haepapa o te takitahi me te hapori, ā, ka whakaawe anō hoki ngā motika, ngā tūranga me ngā haepapa o te takitahi me te hapori i te āhua o te whakahou.</p>	<p>8.1 Ko ngā pūtaketanga, ngā otinga me ngā whakamāramatanga i ngā tūāhua o mua e whai tikanga ana ki Aotearoa nei, he tino pakeke, ā, kei te tautohetia.</p> <p>8.2 E whakaata mai ana ngā tikanga o te wā i ngā āinga pāpori, ngā āinga ohaoha me ngā āinga tōrangapū hoki.</p>	<p>8.1 Ko ngā taiao tūturu me ngā taiao ahurea ka waihangatia e ngā tukanga pāhekoheko, ā, ka taka i raro i ngā pāpātanga me ngā kōrahi rerekē.</p> <p>8.2 He rerekē ngā uara, ngā whakaaro me ngā urupare a te tangata ki ngā kōwhiringa, ngā aukati me ngā otinga ohaoha, pāpori, ā-taiao hoki o te whakarite me te whakatau kaupapa.</p>	<p>8.1 Tino māia ngā māketete kei te pai ngā mahi, engari me whakatōtika te kāwanatanga i ngā māketete kāhore i te tuku pai, i te tuku tika rānei, i ngā hua.</p> <p>8.2 He maha tonu ngā whakaawenga kei runga i te āhua me te rahi o te ōhanga o Aotearoa.</p>

# TIKANGA Ā-IWI

## Te Takanga o Te Wā

Mātai whakamuri kia anga whakamua

### WHĀINGA MĀTĀMUA

Ka whakawhanake mōhiotanga te ākongā ki:

- Te tino whaitake o te ako i ngā kōrero tuku iho e mārama ai ia ki te ao e noho nei ia
- Ētahi tirohanga o te ako i te hītori ka taka iho i raro i ngā kaupapa matua, arā te Tūrangawaewae, Whakapapa, Mana Motuhake, Kaitiakitanga me te Whanaungatanga



### WHĀINGA 1

Kei te mōhio ahau nō hea, nō wai hoki ahau.

**Aronga**  
*Tōku Tū i Te Ao*

**Tā te Māori tirohanga**  
*Tūrangawaewae/Mana motuhake/Kaitiakitanga*

- Nō mua ngā kōrero tuku iho
- He whakahirahira ngā tūmomo kaupapa o te wā, ā, ko ētahi ka whakanuia auautia (hei tauira, te Koroneihana, te rā o Waitangi, te whakanui i a Rātana).

**Aronga**  
*Pou Herenga*

**Tā te Māori tirohanga**  
*Whakapapa/Whanaungatanga/Kaitiakitanga*

- He mea whakaahua te pepeha i te tuakiri.
- He uri te tangata nō ngā tātai kōrero tuku iho, nō ōna tātai whakapapa.
- Nō te whānau, te iwi, te hapori me ētahi atu rōpū te tangata.

### WHĀINGA 2

Kei te mōhio ahau ki ngā kōrero tuku iho o te takiwā e noho nei au.

**Aronga**  
*Tōku Tū i Te Ao*

**Tā te Māori tirohanga**  
*Tūrangawaewae/Mana motuhake/Kaitiakitanga*

- Kua rerekē ētahi kōrero tuku iho i te rohe, hapori rānei, tērā anō ētahi kōrero tuku iho kua mau tonu.
- He whakahirahira ngā kaupapa ā-rohe ki te tangata (hei tauira, Te Rā o Waitangi, Matariki me Puanga).

**Aronga**  
*Pou Herenga*

**Tā te Māori tirohanga**  
*Whakapapa/Whanaungatanga/Kaitiakitanga*

- He momo kōrero tuku iho te pepeha
- He hononga kei waenga i ngā maunga, ngā awa, ngā waka, ngā whānau, ngā hapū me ngā iwi i te rohe.

### WHĀINGA 3

Kei te mōhio ahau ki ā mātou hononga ki takiwā kē.

**Aronga**  
*Tōku Tū i Te Ao*

**Tā te Māori tirohanga**  
*Tūrangawaewae/Mana motuhake/Kaitiakitanga*

- Ka pāpā ngā tūāhua o mua i tētahi rohe ki ētahi atu rohe.
- He hononga kei waenga i ngā kōrero tuku iho o rohe kē.

**Aronga**  
*Pou Herenga*

**Tā te Māori tirohanga**  
*Whakapapa/Whanaungatanga/Kaitiakitanga*

- He rerekē ngā tūmomo hononga o te tangata ki ngā wāhi me ngā kaupapa me te aha he rerekē ngā tirohanga.
- He whanaungatanga, he hononga kei waenga i ngā whānau, ngā hapū, ngā iwi me ngā hapori.

### WHĀINGA 4

Kei te mōhio ahau ki ngā kōrero tuku iho o Aotearoa.

**Aronga**  
*Tōku Tū i Te Ao*

**Tā te Māori tirohanga**  
*Tūrangawaewae/Mana motuhake/Kaitiakitanga*

- He huhua ngā kōrero nehe o Aotearoa e whakaata ana i ngā wheako me ngā tirohanga rerekē a te tangata.
- Nō te ao whānui tonu ngā kōrero nehe o Aotearoa.
- Pāpā ai te āhua o te tuku i ngā kōrero nehe ki te wheako me te mārama o te tangata ki te ao.

**Aronga**  
*Pou Herenga*

**Tā te Māori tirohanga**  
*Whakapapa/Whanaungatanga/Kaitiakitanga*

- He rerekē ngā wheako kōrero tuku iho o tēnā, o tēnā.
- He hononga kei waenga i ngā kōrero nehe o ngā tāngata me ngā wāhi rerekē.

