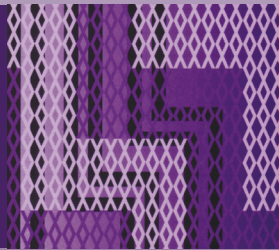


Tikanga ā-lwi



TIKANGA Ā-IWI

“Kāore i kotahi te whakahaere o ngā Tikanga ā-Iwi. He iwi anō me ōna tohunga me ōna tikanga me āna whakahaere. Hiki atu he iwi, pērā tonu. Nō reira, kia mau koe ki ōu ake Mā ō rātou uri e mau ō rātou nā kōrero. Engari kia mau koe ki ngā kōrero a ōu mātua, a ōu tūpuna. Ina ka tika, ka waiho mai ētahi mātauranga hei taonga mōu.”

[Te Whatahoro, 1865]

He aha te Tikanga ā-Iwi?

I puta ake te wairua o te Tikanga ā-Iwi i roto i ngā kupu a Te Whatahoro, arā, te āta titiro ki ngā āhuatanga huhua o te tangata e mārama ai te ākongā ki tōna ao. Ka tirohia ngā mahi a te tangata hei whakatutuki i ōna matea kikokiko, matea pāpori, matea ngākau, matea wairua hoki.

Te hanganga o te Tikanga ā-Iwi

E rima ngā whenu o te Tikanga ā-Iwi.

- Te Whakaritenga Pāpori me te Ahurea
- Te Ao Hurihuri
- Te Wāhi me te Taiao
- Ngā Mahinga Ohaoha
- Te Takanga o Te Wā



Ngā hua o te ako i te Tikanga ā-Iwi?

I roto i te Tikanga ā-Iwi ka whakawhanaketia e te ākongā tōna mōhio ki ngā āhuatanga porihanga me tōna mārama ki ngā āhuatanga whanonga tangata.

Mā tēnei, ka taea e te ākongā te uru i runga i te mōhio, i te haepapa hoki, ki ngā mahi waihanga porihanga.

Ko te Tiriti o Waitangi me ōna āhuatanga katoa te tāhū o te Tikanga ā-Iwi. E mārama ai te ākongā ki tōna ake tūrangawaewae mā te arotahi ki ngā tāngata, ngā tūāhua me ngā whakaawenga i waihanga ai te porihanga o Aotearoa.

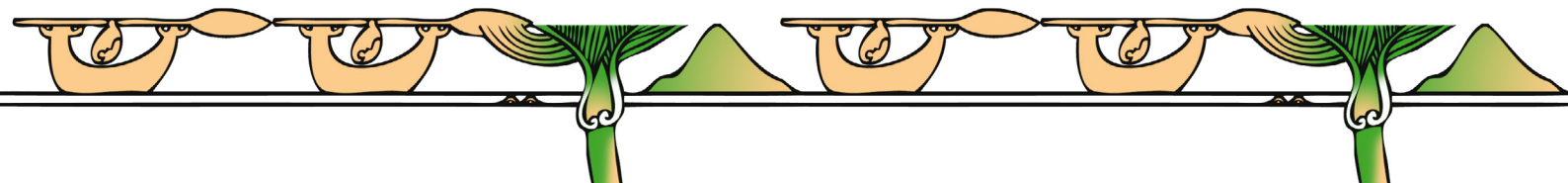
Ka titiro hoki te ākongā ki te noho a ngā iwi o tāwāhi, arā, ki tā rātou nei titiro ki te ao.

Ka tūhura hoki te ākongā i ngā take o te wā kia mārama ai ia ki ngā tūāhua me ngā tāngata tāpua o tēnei ao.

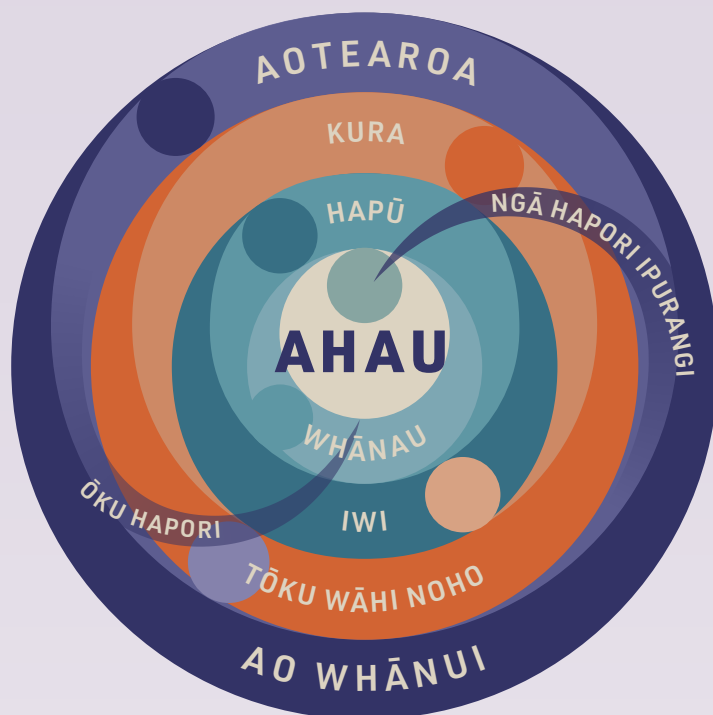
He mea tino whaitake kia whiwhi mōhiotanga, māramatanga hoki ngā ākongā ki tō rātou ake whenua tipu, porihanga, taiao hoki arā e kīia nei ko Aotearoa. I ia tau, me whai huarahi rawa te ākongā ki te whakatipu i tōna mōhiotanga me tōna māramatanga ki ngā tāngata, ngā tūāhua, ngā awenga me ngā ākinga nāna i waihanga ai a Aotearoa i roto i ngā rautau o mua, ā, mohoa noa nei.

Mā te ako i ngā kōrero tuku iho o Aotearoa ka whakawhanake te ākongā i tōna māramatanga ki:

- te mana ahurei o te iwi Māori hei iwi taketake ki Aotearoa;
- te whaitake kia ora tonu ai te reo Māori, ngā tikanga Māori me ngā kōrero tuku iho Māori i runga i te tirohanga o te ao Māori;
- te maha o ngā tirohanga e pā ana ki ngā tūāhua me ngā take o mua iho, o tēnei wā hoki;
- ngā ariā o te whānau, te hapū, te iwi me te hāpori me te hononga o ēnei ki te tuakiri Māori takitahi, takimano hoki;
- ngā take ā-waho, ā-roto i Aotearoa e pāpā ana ki te whakatinanatanga o ngā wawatatanga pāpori, tōrangapū, ahurea, ohaoha hoki o te iwi.



TIKANGA Ā-IWI



Ngā Mātāpono Mātauranga Māori o te Tikanga ā-Iwi

Nō mai rā anō te mātauranga Māori. E mau tonu nei, ā, haere ake nei. Ko te mātauranga Māori he kete mātauranga e ora ana, e tipu ana hei whakamana i te mātauranga me ngā tikanga, hei mātua whakarite kia rukuhia e te ākonga ngā āhuatanga hōhonu o taua kete mātauranga.

Te huarahi ako i te Tikanga ā-Iwi

Ko te huarahi ako i te Tikanga ā-Iwi ko te tukanga o te pakirehua pāpori. Mā roto i tēnei tukanga ia whai wāhi te ākonga ki:

- Te patapatai, te tukatuka me te whakahiato mōhiohio me te whakawhiti kitenga (Pakirehua);
- Te tūhura i ngā rerekētanga o te titiro, te whakaaro me te uara, me ngā take mō ēnei (Te Tūhura Uara);
- Te tiro tiro take, te tāutu me te arotake otinga, me te whakatau huarahi hei whakamatara take pāpori (Te Koringa Pāpori).

Te Tīrewa Ako mō Te Takanga o Te Wā

Ko tā te tīrewa ako o Te Takanga o te Wā he whakaatu i ngā kauneke ako mō te ākonga. Tautohu ai ngā kauneke ako nei i ngā mōhiotanga, ngā māramatanga me ngā pūkenga hoki kia mātua mau i te ākonga e angitu ai tāna ako.

- Kei te mōhio ahau nō hea ahau, nō wai hoki ahau.
- Kei te mōhio ahau ki ngā kōrero tuku iho o te takiwā e noho nei au.
- Kei te mōhio ahau ki ō mātou hononga ki takiwā kē.
- Kei te mōhio ahau ki ngā kōrero tuku iho o Aotearoa.



TIKANGA Ā-IWI

Te Takanga o Te Wā

Mātai whakamuri kia anga whakamua

WHĀINGA MĀTĀMUA

Ka whakawhanake mōhiotanga te ākongā ki:

- Te tino whaitake o te ako i ngā kōrero tuku iho e mārama ai ia ki te ao e noho nei ia
- Ētahi tirohanga o te ako i te hītori ka taka iho i raro i ngā kaupapa matua, arā te Tūrangawaewae, Whakapapa, Mana Motuhake, Kaitiakitanga me te Whanaungatanga



WHĀINGA 1

Kei te mōhio ahau nō hea, nō wai hoki ahau.

Aronga
Tōku Tū i Te Ao

Tā te Māori tirohanga
Tūrangawaewae/Mana motuhake/Kaitiakitanga

- Nō mua ngā kōrero tuku iho
- He whakahirahira ngā tūmomo kaupapa o te wā, ā, ko ētahi ka whakanuia auautia (hei tauira, te Koroneihana, te rā o Waitangi, te whakanui i a Rātana).

Aronga
Ngā Pou Herenga

Tā te Māori tirohanga
Whakapapa/Whanaungatanga/Kaitiakitanga

- He mea whakaahua te pepeha i te tuakiri.
- He uri te tangata nō ngā tātai kōrero tuku iho, nō ōna tātai whakapapa.
- Nō te whānau, te iwi, te hapori me ētahi atu rōpū te tangata.

WHĀINGA 2

Kei te mōhio ahau ki ngā kōrero tuku iho o te takiwā e noho nei au.

Aronga
Tōku Tū i Te Ao

Tā te Māori tirohanga
Tūrangawaewae/Mana motuhake/Kaitiakitanga

- Kua rerekē ētahi kōrero tuku iho i te rohe, hapori rānei, tērā anō ētahi kōrero tuku iho kua mau tonu.
- He whakahirahira ngā kaupapa ā-rohe ki te tangata (hei tauira, Te Rā o Waitangi, Matariki me Puanga).

Aronga
Ngā Pou Herenga

Tā te Māori tirohanga
Whakapapa/Whanaungatanga/Kaitiakitanga

- He momo kōrero tuku iho te pepeha
- He hononga kei waenga i ngā maunga, ngā awa, ngā waka, ngā whānau, ngā hapū me ngā iwi i te rohe.

WHĀINGA 3

Kei te mōhio ahau ki ā mātou hononga ki takiwā kē.

Aronga
Tōku Tū i Te Ao

Tā te Māori tirohanga
Tūrangawaewae/Mana motuhake/Kaitiakitanga

- Ka pāpā ngā tūāhua o mua i tētahi rohe ki ētahi atu rohe.
- He hononga kei waenga i ngā kōrero tuku iho o rohe kē.

Aronga
Ngā Pou Herenga

Tā te Māori tirohanga
Whakapapa/Whanaungatanga/Kaitiakitanga

- He rerekē ngā tūmomo hononga o te tangata ki ngā wāhi me ngā kaupapa me te aha he rerekē ngā tirohanga.
- He whanaungatanga, he hononga kei waenga i ngā whānau, ngā hapū, ngā iwi me ngā hapori.

WHĀINGA 4

Kei te mōhio ahau ki ngā kōrero tuku iho o Aotearoa.

Aronga
Tōku Tū i Te Ao

Tā te Māori tirohanga
Tūrangawaewae/Mana motuhake/Kaitiakitanga

- He huhua ngā kōrero nehe o Aotearoa e whakaata ana i ngā wheako me ngā tirohanga rerekē a te tangata.
- Nō te ao whānui tonu ngā kōrero nehe o Aotearoa.
- Pāpā ai te āhua o te tuku i ngā kōrero nehe ki te wheako me te mārama o te tangata ki te ao.

Aronga
Ngā Pou Herenga

Tā te Māori tirohanga
Whakapapa/Whanaungatanga/Kaitiakitanga

- He rerekē ngā wheako kōrero tuku iho o tēnā, o tēnā.
- He hononga kei waenga i ngā kōrero nehe o ngā tāngata me ngā wāhi rerekē.

